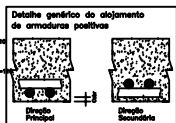
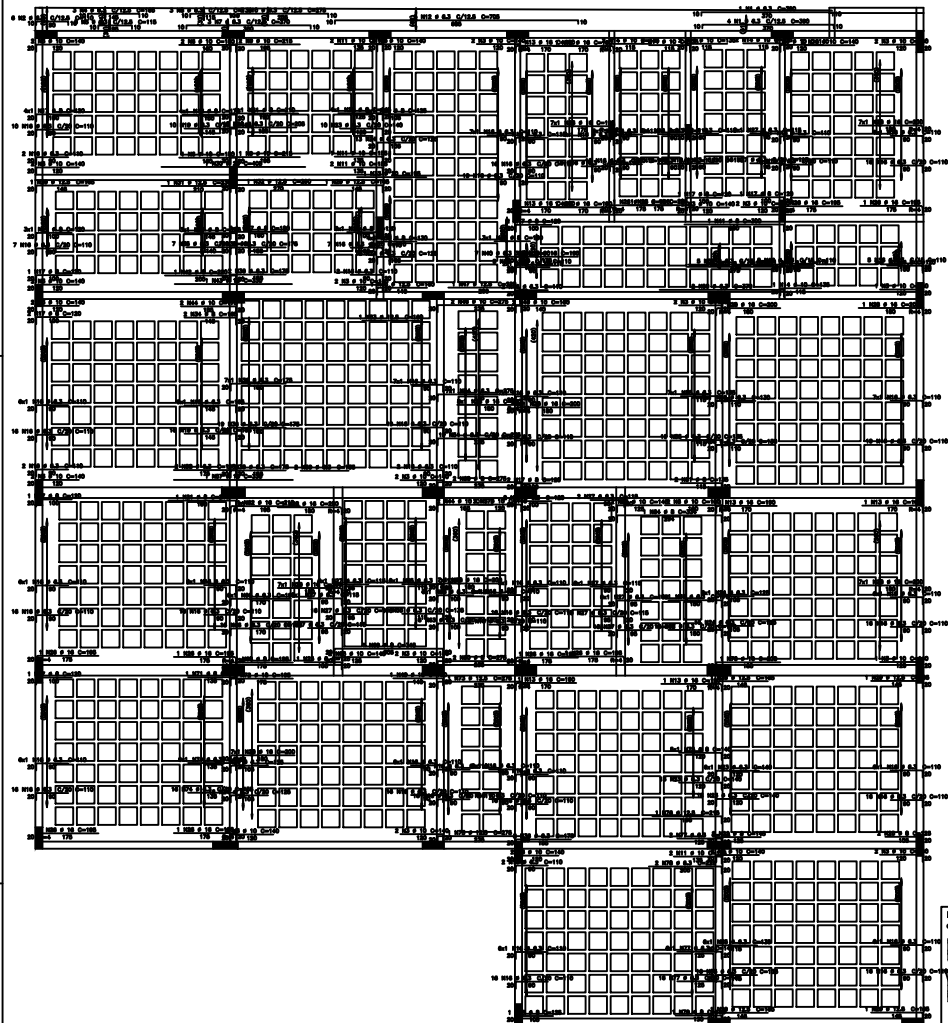


PRODUIZIDO POR UMA VERSAO DO AUTODESK PARA ESTUDANTES

PRODUIZIDO POR UMA VERSAO DO AUTODESK PARA ESTUDANTES

laje cobertura – Armadura negativa principal

1X

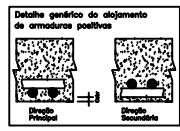
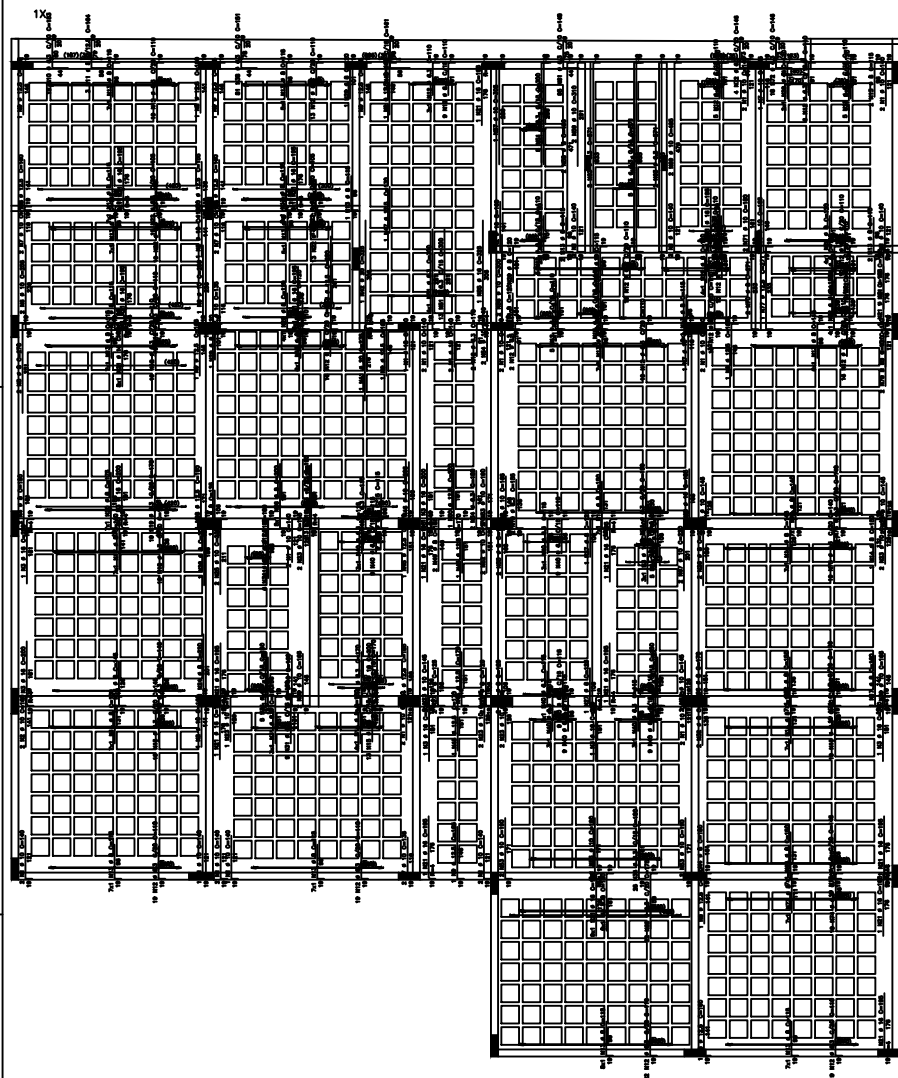


ADP	POS	RELAÇÃO	COMENTÁRIOS
1	1	1	1
2	2	2	2
3	3	3	3
4	4	4	4
5	5	5	5
6	6	6	6
7	7	7	7
8	8	8	8
9	9	9	9
10	10	10	10
11	11	11	11
12	12	12	12
13	13	13	13
14	14	14	14
15	15	15	15
16	16	16	16
17	17	17	17
18	18	18	18
19	19	19	19
20	20	20	20
21	21	21	21
22	22	22	22
23	23	23	23
24	24	24	24
25	25	25	25
26	26	26	26
27	27	27	27
28	28	28	28
29	29	29	29
30	30	30	30
31	31	31	31
32	32	32	32
33	33	33	33
34	34	34	34
35	35	35	35
36	36	36	36
37	37	37	37
38	38	38	38
39	39	39	39
40	40	40	40
41	41	41	41
42	42	42	42
43	43	43	43
44	44	44	44
45	45	45	45
46	46	46	46
47	47	47	47
48	48	48	48
49	49	49	49
50	50	50	50
51	51	51	51
52	52	52	52
53	53	53	53
54	54	54	54
55	55	55	55
56	56	56	56
57	57	57	57
58	58	58	58
59	59	59	59
60	60	60	60
61	61	61	61
62	62	62	62
63	63	63	63
64	64	64	64
65	65	65	65
66	66	66	66
67	67	67	67
68	68	68	68
69	69	69	69
70	70	70	70
71	71	71	71
72	72	72	72
73	73	73	73
74	74	74	74
75	75	75	75
76	76	76	76
77	77	77	77
78	78	78	78
79	79	79	79
80	80	80	80
81	81	81	81
82	82	82	82
83	83	83	83
84	84	84	84
85	85	85	85
86	86	86	86
87	87	87	87
88	88	88	88
89	89	89	89
90	90	90	90
91	91	91	91
92	92	92	92
93	93	93	93
94	94	94	94
95	95	95	95
96	96	96	96
97	97	97	97
98	98	98	98
99	99	99	99
100	100	100	100

ADP	POS	RELAÇÃO	COMENTÁRIOS
1	1	1	1
2	2	2	2
3	3	3	3
4	4	4	4
5	5	5	5
6	6	6	6
7	7	7	7
8	8	8	8
9	9	9	9
10	10	10	10
11	11	11	11
12	12	12	12
13	13	13	13
14	14	14	14
15	15	15	15
16	16	16	16
17	17	17	17
18	18	18	18
19	19	19	19
20	20	20	20
21	21	21	21
22	22	22	22
23	23	23	23
24	24	24	24
25	25	25	25
26	26	26	26
27	27	27	27
28	28	28	28
29	29	29	29
30	30	30	30
31	31	31	31
32	32	32	32
33	33	33	33
34	34	34	34
35	35	35	35
36	36	36	36
37	37	37	37
38	38	38	38
39	39	39	39
40	40	40	40
41	41	41	41
42	42	42	42
43	43	43	43
44	44	44	44
45	45	45	45
46	46	46	46
47	47	47	47
48	48	48	48
49	49	49	49
50	50	50	50
51	51	51	51
52	52	52	52
53	53	53	53
54	54	54	54
55	55	55	55
56	56	56	56
57	57	57	57
58	58	58	58
59	59	59	59
60	60	60	60
61	61	61	61
62	62	62	62
63	63	63	63
64	64	64	64
65	65	65	65
66	66	66	66
67	67	67	67
68	68	68	68
69	69	69	69
70	70	70	70
71	71	71	71
72	72	72	72
73	73	73	73
74	74	74	74
75	75	75	75
76	76	76	76
77	77	77	77
78	78	78	78
79	79	79	79
80	80	80	80
81	81	81	81
82	82	82	82
83	83	83	83
84	84	84	84
85	85	85	85
86	86	86	86
87	87	87	87
88	88	88	88
89	89	89	89
90	90	90	90
91	91	91	91
92	92	92	92
93	93	93	93
94	94	94	94
95	95	95	95
96	96	96	96
97	97	97	97
98	98	98	98
99	99	99	99
100	100	100	100

PROJETO	0001
PA = 20	0001
ICET	001
Laboratório ICET	001
laje cobertura – Armadura negativa principal	00
10/10/2001	10/10/2001

laje cobertura – Armadura negativa secundaria

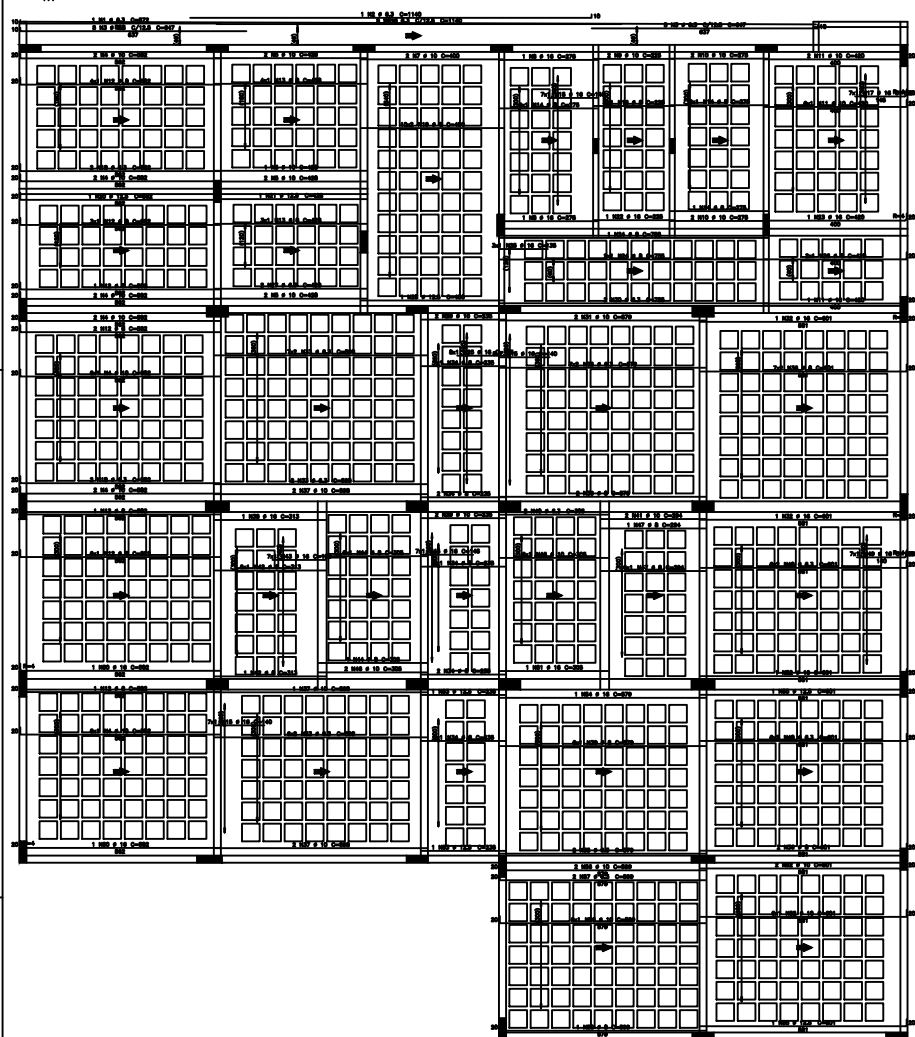


ADT	POS	QNTD	COMPR	DIAM	NOTAS
1	1	1	1	1	1
2	2	2	2	2	2
3	3	3	3	3	3
4	4	4	4	4	4
5	5	5	5	5	5
6	6	6	6	6	6
7	7	7	7	7	7
8	8	8	8	8	8
9	9	9	9	9	9
10	10	10	10	10	10
11	11	11	11	11	11
12	12	12	12	12	12
13	13	13	13	13	13
14	14	14	14	14	14
15	15	15	15	15	15
16	16	16	16	16	16
17	17	17	17	17	17
18	18	18	18	18	18
19	19	19	19	19	19
20	20	20	20	20	20
21	21	21	21	21	21
22	22	22	22	22	22
23	23	23	23	23	23
24	24	24	24	24	24
25	25	25	25	25	25
26	26	26	26	26	26
27	27	27	27	27	27
28	28	28	28	28	28
29	29	29	29	29	29
30	30	30	30	30	30
31	31	31	31	31	31
32	32	32	32	32	32
33	33	33	33	33	33
34	34	34	34	34	34
35	35	35	35	35	35
36	36	36	36	36	36
37	37	37	37	37	37
38	38	38	38	38	38
39	39	39	39	39	39
40	40	40	40	40	40
41	41	41	41	41	41
42	42	42	42	42	42
43	43	43	43	43	43
44	44	44	44	44	44
45	45	45	45	45	45
46	46	46	46	46	46
47	47	47	47	47	47
48	48	48	48	48	48
49	49	49	49	49	49
50	50	50	50	50	50
51	51	51	51	51	51
52	52	52	52	52	52
53	53	53	53	53	53
54	54	54	54	54	54
55	55	55	55	55	55
56	56	56	56	56	56
57	57	57	57	57	57
58	58	58	58	58	58
59	59	59	59	59	59
60	60	60	60	60	60
61	61	61	61	61	61
62	62	62	62	62	62
63	63	63	63	63	63
64	64	64	64	64	64
65	65	65	65	65	65
66	66	66	66	66	66
67	67	67	67	67	67
68	68	68	68	68	68
69	69	69	69	69	69
70	70	70	70	70	70
71	71	71	71	71	71
72	72	72	72	72	72
73	73	73	73	73	73
74	74	74	74	74	74
75	75	75	75	75	75
76	76	76	76	76	76
77	77	77	77	77	77
78	78	78	78	78	78
79	79	79	79	79	79
80	80	80	80	80	80
81	81	81	81	81	81
82	82	82	82	82	82
83	83	83	83	83	83
84	84	84	84	84	84
85	85	85	85	85	85
86	86	86	86	86	86
87	87	87	87	87	87
88	88	88	88	88	88
89	89	89	89	89	89
90	90	90	90	90	90
91	91	91	91	91	91
92	92	92	92	92	92
93	93	93	93	93	93
94	94	94	94	94	94
95	95	95	95	95	95
96	96	96	96	96	96
97	97	97	97	97	97
98	98	98	98	98	98
99	99	99	99	99	99
100	100	100	100	100	100

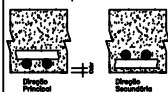
ADT	POS	QNTD	COMPR	DIAM	NOTAS
1	1	1	1	1	1
2	2	2	2	2	2
3	3	3	3	3	3
4	4	4	4	4	4
5	5	5	5	5	5
6	6	6	6	6	6
7	7	7	7	7	7
8	8	8	8	8	8
9	9	9	9	9	9
10	10	10	10	10	10
11	11	11	11	11	11
12	12	12	12	12	12
13	13	13	13	13	13
14	14	14	14	14	14
15	15	15	15	15	15
16	16	16	16	16	16
17	17	17	17	17	17
18	18	18	18	18	18
19	19	19	19	19	19
20	20	20	20	20	20
21	21	21	21	21	21
22	22	22	22	22	22
23	23	23	23	23	23
24	24	24	24	24	24
25	25	25	25	25	25
26	26	26	26	26	26
27	27	27	27	27	27
28	28	28	28	28	28
29	29	29	29	29	29
30	30	30	30	30	30
31	31	31	31	31	31
32	32	32	32	32	32
33	33	33	33	33	33
34	34	34	34	34	34
35	35	35	35	35	35
36	36	36	36	36	36
37	37	37	37	37	37
38	38	38	38	38	38
39	39	39	39	39	39
40	40	40	40	40	40
41	41	41	41	41	41
42	42	42	42	42	42
43	43	43	43	43	43
44	44	44	44	44	44
45	45	45	45	45	45
46	46	46	46	46	46
47	47	47	47	47	47
48	48	48	48	48	48
49	49	49	49	49	49
50	50	50	50	50	50
51	51	51	51	51	51
52	52	52	52	52	52
53	53	53	53	53	53
54	54	54	54	54	54
55	55	55	55	55	55
56	56	56	56	56	56
57	57	57	57	57	57
58	58	58	58	58	58
59	59	59	59	59	59
60	60	60	60	60	60
61	61	61	61	61	61
62	62	62	62	62	62
63	63	63	63	63	63
64	64	64	64	64	64
65	65	65	65	65	65
66	66	66	66	66	66
67	67	67	67	67	67
68	68	68	68	68	68
69	69	69	69	69	69
70	70	70	70	70	70
71	71	71	71	71	71
72	72	72	72	72	72
73	73	73	73	73	73
74	74	74	74	74	74
75	75	75	75	75	75
76	76	76	76	76	76
77	77	77	77	77	77
78	78	78	78	78	78
79	79	79	79	79	79
80	80	80	80	80	80
81	81	81	81	81	81
82	82	82	82	82	82
83	83	83	83	83	83
84	84	84	84	84	84
85	85	85	85	85	85
86	86	86	86	86	86
87	87	87	87	87	87
88	88	88	88	88	88
89	89	89	89	89	89
90	90	90	90	90	90
91	91	91	91	91	91
92	92	92	92	92	92
93	93	93	93	93	93
94	94	94	94	94	94
95	95	95	95	95	95
96	96	96	96	96	96
97	97	97	97	97	97
98	98	98	98	98	98
99	99	99	99	99	99
100	100	100	100	100	100

0001	
Icet	
Laboratório Icet	
002	
laje cobertura – Armadura negativa secundaria	
00	

18



Detalhe genérico do alojamento de armaduras positivas

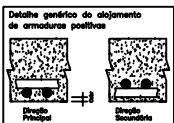
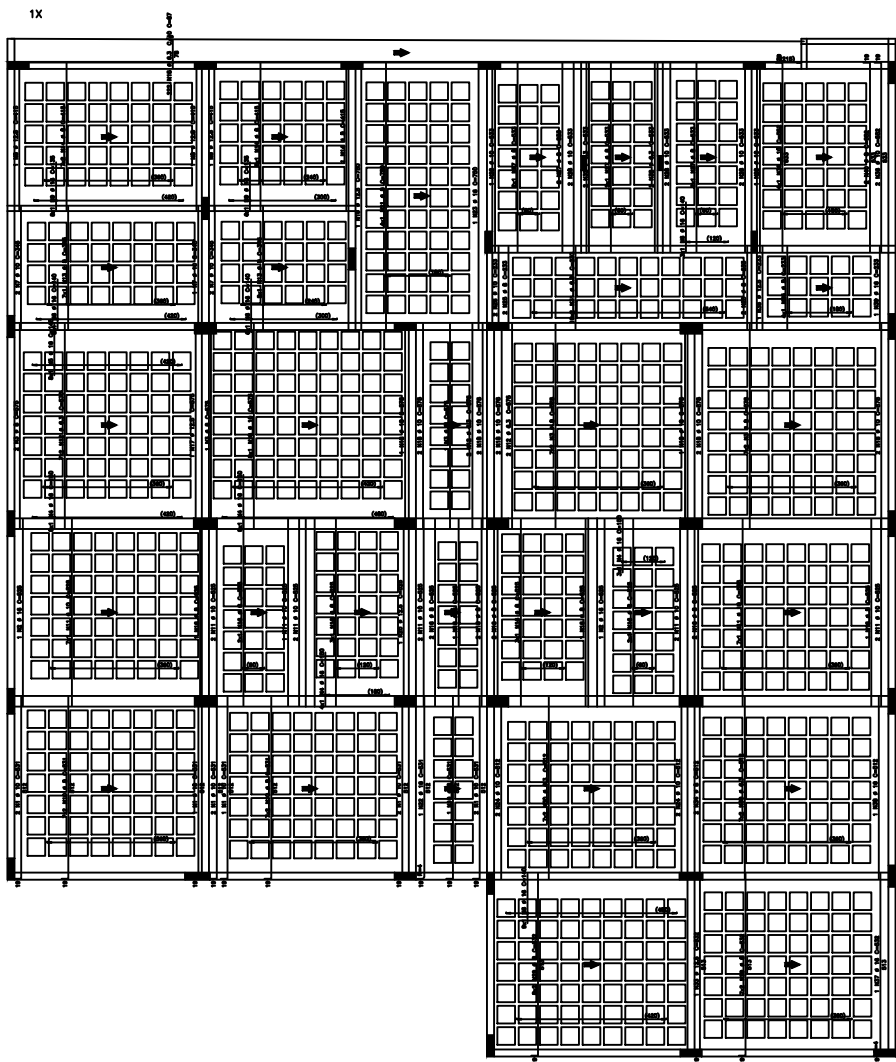
[illegible]

RESUMO ADO CA 80-80			
ADO	HT (mm)	COMP (m)	PESO (kg)
ADA	4,3	888	148
ADA	6	891	232
ADA	8	492	346
ADA	12,5	31	30
ADA	16	137	216

Autorização						0000 17
Nº = 39 SP:						0001
Cod: Icet						000 17
Lab: Laboratório Icet						003
Obs:						000 17
loja cobertura - Armadura positiva principal						00
08/09/2001	100	12-22-111-000-000	0000	00	00	00 17

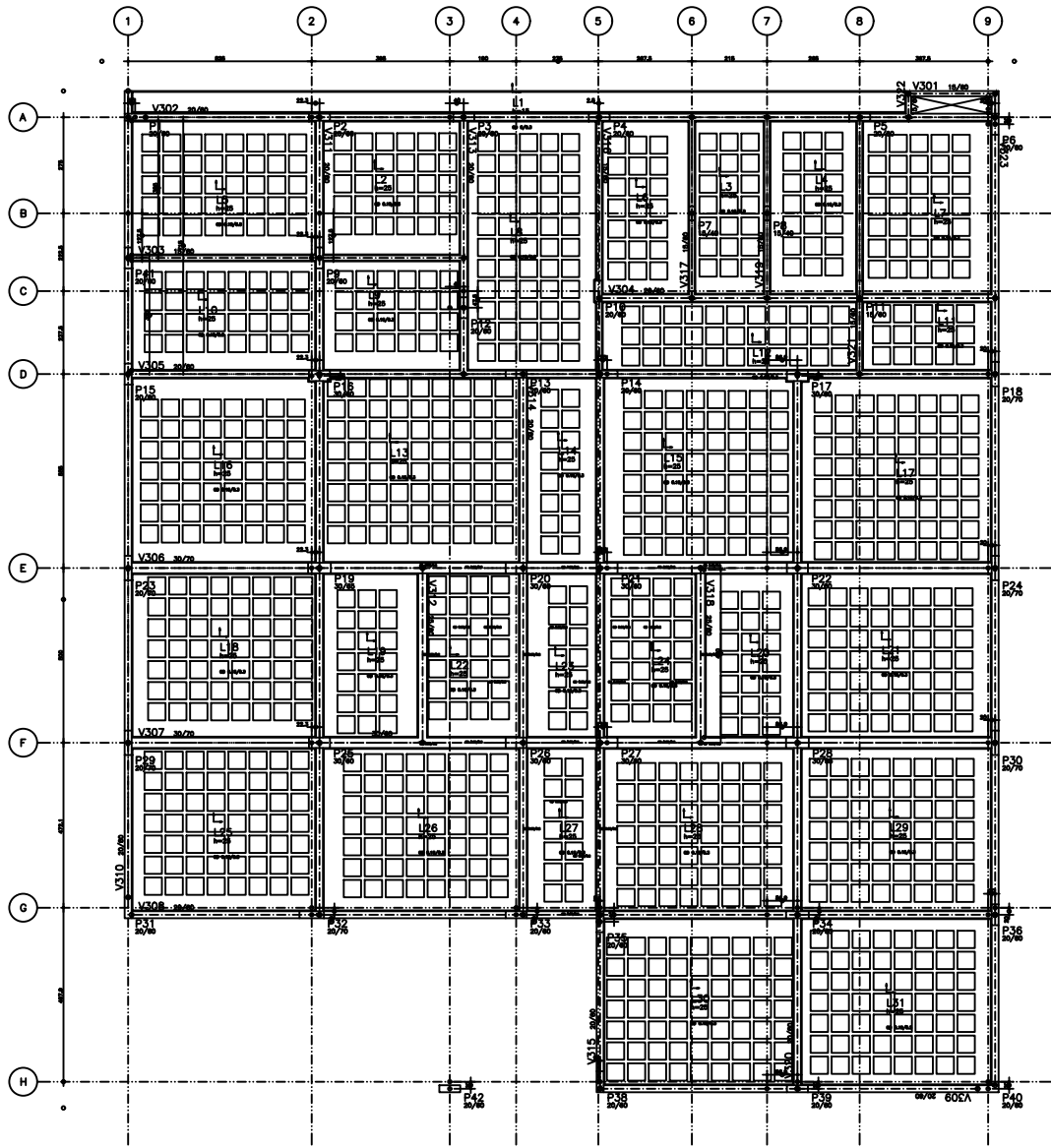
laje cobertura – Armadura positiva secundaria

18

[illegible]

RESUMO AÇO CA 50-60			
AÇO	BIT (mm)	COMP. (m)	PESO (kg)
80A	6,3	800	136
80A	8	800	236
80A	10	410	280
80A	12,5	30	37
80A	16	130	219
Peso total		1540	974

00000000 00 = 25 MPa		000 0 7 0001
0001 Icet		000 0 7 004
0002 Laboratório Icet		000 0 7 00
0003 Iota cobertura - Armadura positiva secundaria		000 0 7 00
00/02/2001	000 0 7	000 0 7

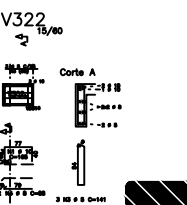
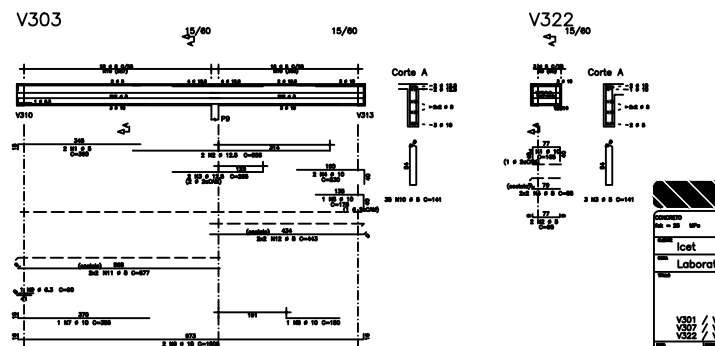
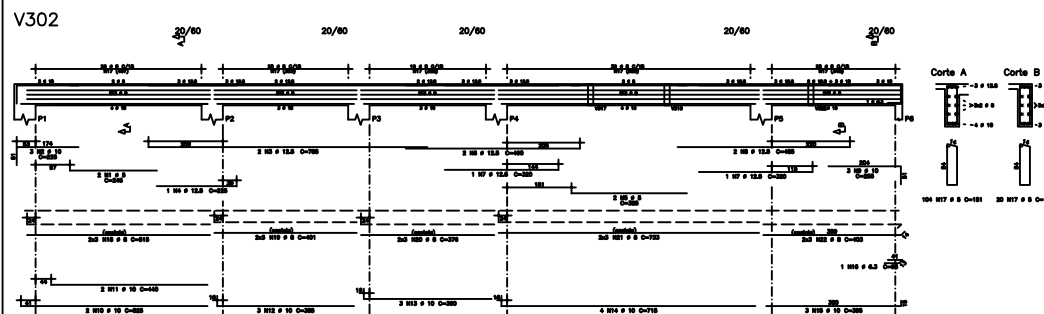
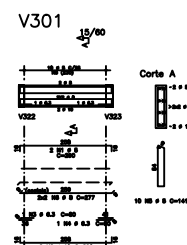
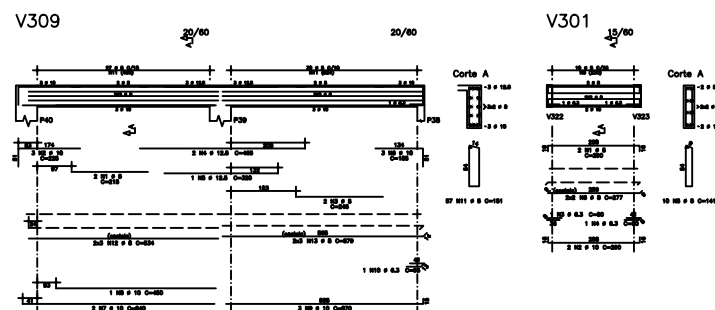
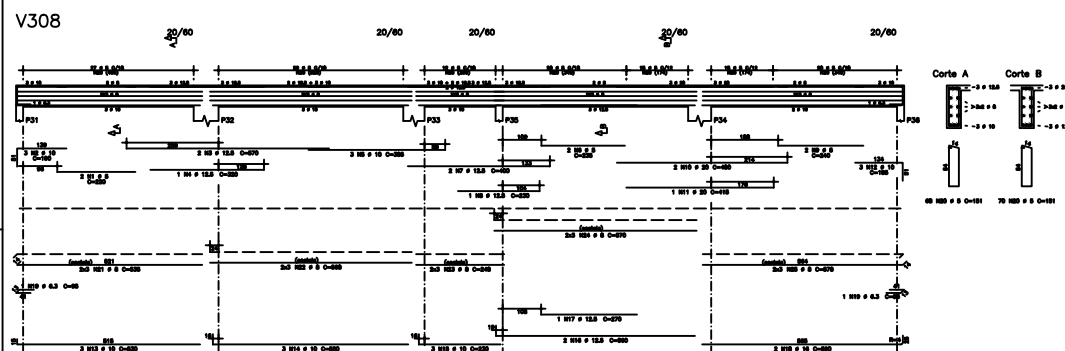
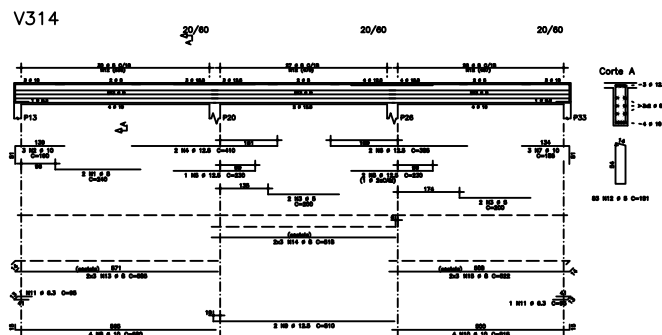
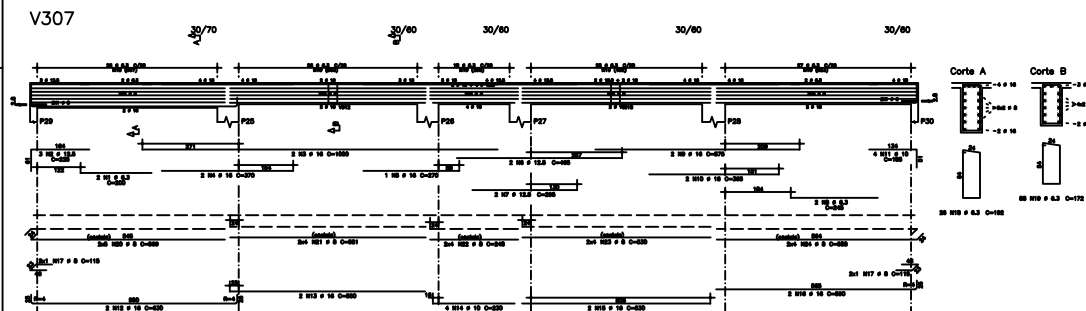
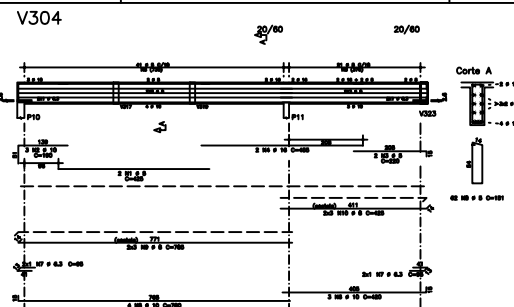
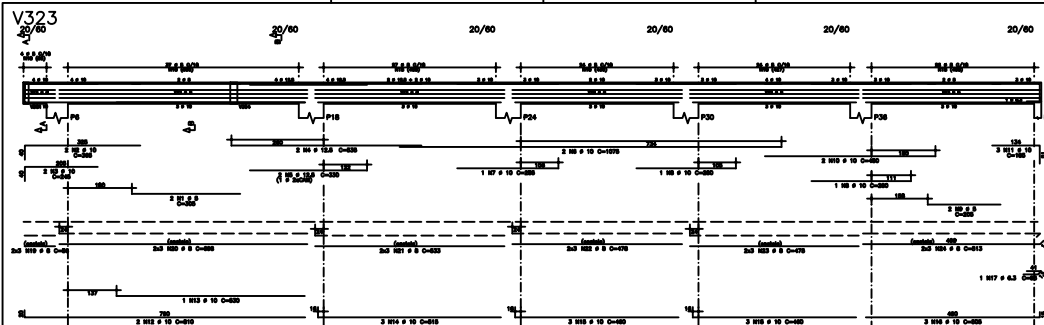


Ensembles de algues			
Pilar	λ	Pilar	λ
P1	-0.9114	P8	-0.7773
P2	-0.9114	P9	-0.7773
P3	-0.9114	P10	-0.7773
P4	-0.9114	P11	-0.7773
P5	-0.9114	P12	-0.7773
P6	-0.9114	P13	-0.7773
P7	-0.9114	P14	-0.7773
P8	-0.9114	P15	-0.7773
P9	-0.9114	P16	-0.7773
P10	-0.9114	P17	-0.7773
P11	-0.9114	P18	-0.7773
P12	-0.9114	P19	-0.7773
P13	-0.9114	P20	-0.7773
P14	-0.9114	P21	-0.7773
P15	-0.9114	P22	-0.7773
P16	-0.9114	P23	-0.7773
P17	-0.9114	P24	-0.7773
P18	-0.9114	P25	-0.7773
P19	-0.9114	P26	-0.7773
P20	-0.9114	P27	-0.7773
P21	-0.9114	P28	-0.7773
P22	-0.9114	P29	-0.7773
P23	-0.9114	P30	-0.7773
P24	-0.9114	P31	-0.7773
P25	-0.9114	P32	-0.7773
P26	-0.9114	P33	-0.7773
P27	-0.9114	P34	-0.7773
P28	-0.9114	P35	-0.7773
P29	-0.9114	P36	-0.7773
P30	-0.9114	P37	-0.7773
P31	-0.9114	P38	-0.7773
P32	-0.9114	P39	-0.7773
P33	-0.9114	P40	-0.7773
P34	-0.9114	P41	-0.7773
P35	-0.9114	P42	-0.7773
P36	-0.9114	P43	-0.7773
P37	-0.9114	P44	-0.7773
P38	-0.9114	P45	-0.7773
P39	-0.9114	P46	-0.7773
P40	-0.9114	P47	-0.7773
P41	-0.9114	P48	-0.7773
P42	-0.9114	P49	-0.7773
P43	-0.9114	P50	-0.7773
P44	-0.9114	P51	-0.7773
P45	-0.9114	P52	-0.7773
P46	-0.9114	P53	-0.7773
P47	-0.9114	P54	-0.7773
P48	-0.9114	P55	-0.7773
P49	-0.9114	P56	-0.7773
P50	-0.9114	P57	-0.7773
P51	-0.9114	P58	-0.7773
P52	-0.9114	P59	-0.7773
P53	-0.9114	P60	-0.7773
P54	-0.9114	P61	-0.7773
P55	-0.9114	P62	-0.7773
P56	-0.9114	P63	-0.7773
P57	-0.9114	P64	-0.7773
P58	-0.9114	P65	-0.7773
P59	-0.9114	P66	-0.7773
P60	-0.9114	P67	-0.7773
P61	-0.9114	P68	-0.7773
P62	-0.9114	P69	-0.7773
P63	-0.9114	P70	-0.7773
P64	-0.9114	P71	-0.7773
P65	-0.9114	P72	-0.7773
P66	-0.9114	P73	-0.7773
P67	-0.9114	P74	-0.7773
P68	-0.9114	P75	-0.7773
P69	-0.9114	P76	-0.7773
P70	-0.9114	P77	-0.7773
P71	-0.9114	P78	-0.7773
P72	-0.9114	P79	-0.7773
P73	-0.9114	P80	-0.7773
P74	-0.9114	P81	-0.7773
P75	-0.9114	P82	-0.7773
P76	-0.9114	P83	-0.7773
P77	-0.9114	P84	-0.7773
P78	-0.9114	P85	-0.7773
P79	-0.9114	P86	-0.7773
P80	-0.9114	P87	-0.7773
P81	-0.9114	P88	-0.7773
P82	-0.9114	P89	-0.7773
P83	-0.9114	P90	-0.7773
P84	-0.9114	P91	-0.7773
P85	-0.9114	P92	-0.7773
P86	-0.9114	P93	-0.7773
P87	-0.9114	P94	-0.7773
P88	-0.9114	P95	-0.7773
P89	-0.9114	P96	-0.7773
P90	-0.9114	P97	-0.7773
P91	-0.9114	P98	-0.7773
P92	-0.9114	P99	-0.7773
P93	-0.9114	P100	-0.7773
P94	-0.9114	P101	-0.7773
P95	-0.9114	P102	-0.7773
P96	-0.9114	P103	-0.7773
P97	-0.9114	P104	-0.7773
P98	-0.9114	P105	-0.7773
P99	-0.9114	P106	-0.7773
P100	-0.9114	P107	-0.7773
P101	-0.9114	P108	-0.7773
P102	-0.9114	P109	-0.7773
P103	-0.9114	P110	-0.7773
P104	-0.9114	P111	-0.7773
P105	-0.9114	P112	-0.7773
P106	-0.9114	P113	-0.7773
P107	-0.9114	P114	-0.7773
P108	-0.9114	P115	-0.7773
P109	-0.9114	P116	-0.7773
P110	-0.9114	P117	-0.7773
P111	-0.9114	P118	-0.7773
P112	-0.9114	P119	-0.7773
P113	-0.9114	P120	-0.7773
P114	-0.9114	P121	-0.7773
P115	-0.9114	P122	-0.7773
P116	-0.9114	P123	-0.7773
P117	-0.9114	P124	-0.7773
P118	-0.9114	P125	-0.7773
P119	-0.9114	P126	-0.7773
P120	-0.9114	P127	-0.7773
P121	-0.9114	P128	-0.7773
P122	-0.9114	P129	-0.7773
P123	-0.9114	P130	-0.7773
P124	-0.9114	P131	-0.7773
P125	-0.9114	P132	-0.7773
P126	-0.9114	P133	-0.7773
P127	-0.9114	P134	-0.7773
P128	-0.9114	P135	-0.7773
P129	-0.9114	P136	-0.7773
P130	-0.9114	P137	-0.7773
P131	-0.9114	P138	-0.7773
P132	-0.9114	P139	-0.7773
P133	-0.9114	P140	-0.7773
P134	-0.9114	P141	-0.7773
P135	-0.9114	P142	-0.7773
P136	-0.9114	P143	-0.7773
P137	-0.9114	P144	-0.7773
P138	-0.9114	P145	-0.7773
P139	-0.9114	P146	-0.7773
P140	-0.9114	P147	-0.7773
P141	-0.9114	P148	-0.7773
P142	-0.9114	P149	-0.7773
P143	-0.9114	P150	-0.7773
P144	-0.9114	P151	-0.7773
P145	-0.9114	P152	-0.7773
P146	-0.9114	P153	-0.7773
P147	-0.9114	P154	-0.7773
P148	-0.9114	P155	-0.7773
P149	-0.9114	P156	-0.7773
P150	-0.9114	P157	-0.7773
P151	-0.9114	P158	-0.7773
P152	-0.9114	P159	-0.7773
P153	-0.9114	P160	-0.7773
P154	-0.9114	P161	-0.7773
P155	-0.9114	P162	-0.7773
P156	-0.9114	P163	-0.7773
P157	-0.9114	P164	-0.7773
P158	-0.9114	P165	-0.7773
P159	-0.9114	P166	-0.7773
P160	-0.9114	P167	-0.7773
P161	-0.9114	P168	-0.7773
P162	-0.9114	P169	-0.7773
P163	-0.9114	P170	-0.7773
P164	-0.9114	P171	-0.7773
P165	-0.9114	P172	-0.7773
P166	-0.9114	P173	-0.7773
P167	-0.9114	P174	-0.7773
P168	-0.9114	P175	-0.7773
P169	-0.9114	P176	-0.7773
P170	-0.9114	P177	-0.7773
P171	-0.9114	P178	-0.7773
P172	-0.9114	P179	-0.7773
P173	-0.9114	P180	-0.7773
P174	-0.9114	P181	-0.7773
P175	-0.9114	P182	-0.7773
P176	-0.9114	P183	-0.7773
P177	-0.9114	P184	-0.7773
P178	-0.9114	P185	-0.7773
P179	-0.9114	P186	-0.7773
P180	-0.9114	P187	-0.7773
P181	-0.9114	P188	-0.7773
P182	-0.9114	P189	-0.7773
P183	-0.9114	P190	-0.7773
P184	-0.9114	P191	-0.7773
P185	-0.9114	P192	-0.7773
P186	-0.9114	P193	-0.7773
P187	-0.9114	P194	-0.7773
P188	-0.9114	P195	-0.7773
P189	-0.9114	P196	-0.7773
P190	-0.9114	P197	-0.7773
P191	-0.9114	P198	-0.7773
P192	-0.9114	P199	-0.7773
P193	-0.9114	P200	-0.7773
P194	-0.9114	P201	-0.7773
P195	-0.9114	P202	-0.7773
P196	-0.9114	P203	-0.7773
P197	-0.9114	P204	-0.7773
P198	-0.9114	P205	-0.7773
P199	-0.9114	P206	-0.7773
P200	-0.9114	P207	-0.7773
P201	-0.9114	P208	-0.7773
P202	-0.9114	P209	-0.7773
P203	-0.9114	P210	-0.7773
P204	-0.9114	P211	-0.7773
P205	-0.9114	P212	-0.7773
P206	-0.9114	P213	-0.7773
P207	-0.9114	P214	-0.7773
P208	-0.9114	P215	-0.7773
P209	-0.9114	P216	-0.7773
P210	-0.9114	P217	-0.7773
P211	-0.9114	P218	-0.7773
P212	-0.9114	P219	-0.7773
P213	-0.9114	P220	-0.7773
P214	-0.9114	P221	-0.7773
P215	-0.9114	P222	-0.7773
P216	-0.9114	P223	-0.7773
P217	-0.9114	P224	-0.7773
P218	-0.9114	P225	-0.7773
P219	-0.9114	P226	-0.7773
P220	-0.9114	P227	-0.7773
P221	-0.9114	P228	-0.7773
P222	-0.9114	P229	-0.7773
P223	-0.9114	P230	-0.7773
P224	-0.9114	P231	-0.7773
P225	-0.9114	P232	-0.7773
P226	-0.9114	P233	-0.7773
P227	-0.9114	P234	-0.7773
P228	-0.9114	P235	-0.7773
P229	-0.9114	P236	-0.7773
P230	-0.9114	P237	-0.7773
P231	-0.9114	P238	-0.7773
P232	-0.9114	P239	-0.7773
P233	-0.9114	P240	-0.7773
P234	-0.9114	P241	-0.7773
P235	-0.9114	P242	-0.7773
P236	-0.9114	P243	-0.7773
P237	-0.9114	P244	-0.7773
P238	-0.9114	P245	-0.7773
P239	-0.9114	P246	-0.7773
P240	-0.9114	P247	-0.7773
P241	-0.9114	P248	-0.7773
P242	-0.9114	P249	-0.7773
P243	-0.9114	P250	-0.7773
P244	-0.9114	P251	-0.7773
P245	-0.9114	P252	-0.7773
P246	-0.9114	P253	-0.7773
P247	-0.9114	P254	-0.7773
P248	-0.9114	P255	-0.7773
P249	-0.9114	P256	-0.7773
P250	-0.9114	P257	-0.7773
P251	-0.9114	P258	-0.7773
P252	-0.9114	P259	-0.7773
P253	-0.9114	P260	-0.7773
P254	-0.9114	P261	-0.7773
P255	-0.9114	P262	-0.7773
P256	-0.9114	P263	-0.7773
P257	-0.9114	P264	-0.7773
P258	-0.9114	P265	-0.7773
P259	-0.9114	P266	-0.7773
P260	-0.9114	P267	-0.7773
P261	-0.9114	P268	-0.7773
P262	-0.9114	P269	-0.7773
P263	-0.9114	P270	-0.7773
P264	-0.9114	P271	-0.7773
P265	-0.9114	P272	-0.7773
P266	-0.9114	P273	-0.7773
P267	-0.9114	P274	-0.7773
P268	-0.9114	P275	-0.7773
P269	-0.9114	P276	-0.7773
P270	-0.9114	P277	-0.7773
P271	-0.9114	P278	-0.7773
P272	-0.9114	P279	-0.7773
P273	-0.9114	P280	-0.7773
P274	-0.9114	P281	-0.7773
P275	-0.9114	P282	-0.7773
P276	-0.9114	P283	-0.7773
P277	-0.9114	P284	-0.7773
P278	-0.9114	P285	-0.7773
P279	-0.9114	P286	-0.7773
P280	-0.9114	P287	-0.7773
P281	-0.9114	P288	-0.7773
P282	-0.9114	P289	-0.7773
P283	-0.9114	P290	-0.7773
P284	-0.9114	P291	-0.7773
P285	-0.9114	P292	-0.7773
P286	-0.9114	P293	-0.7773
P287	-0.9114	P294	-0.7773
P288	-0.9114	P295	-0.7773
P289	-0.9114	P296	-0.7773
P290	-0.9114	P297	-0.7773
P291	-0.9114	P298	-0.7773
P292	-0.9114	P299	-0.7773
P293	-0.9114	P300	-0.7773
P294	-0.9114	P301	-0.7773
P295	-0.9114	P302	-0.7773
P296	-0.9114	P303	-0.7773
P297	-0.9114	P304	-0.7773
P298	-0.9114	P305	-0.7773
P299	-0.9		

[illegible]

Date	Time	Location	Weather	Wind	Temp	Humidity	Pressure	Visibility	Clouds	Sea	Current	Tide	Fish		Total	
													Species	Count		
1/1/2020	06:00	Port of Call	Clear	10kts	22°C	75%	1013	10km	0-1000	Calm	None	Low	Nothing	0	0	0
1/1/2020	06:30	Port of Call	Clear	10kts	22°C	75%	1013	10km	0-1000	Calm	None	Low	Nothing	0	0	0
1/1/2020	07:00	Port of Call	Clear	10kts	22°C	75%	1013	10km	0-1000	Calm	None	Low	Nothing	0	0	0
1/1/2020	07:30	Port of Call	Clear	10kts	22°C	75%	1013	10km	0-1000	Calm	None	Low	Nothing	0	0	0
1/1/2020	08:00	Port of Call	Clear	10kts	22°C	75%	1013	10km	0-1000	Calm	None	Low	Nothing	0	0	0
1/1/2020	08:30	Port of Call	Clear	10kts	22°C	75%	1013	10km	0-1000	Calm	None	Low	Nothing	0	0	0
1/1/2020	09:00	Port of Call	Clear	10kts	22°C	75%	1013	10km	0-1000	Calm	None	Low	Nothing	0	0	0
1/1/2020	09:30	Port of Call	Clear	10kts	22°C	75%	1013	10km	0-1000	Calm	None	Low	Nothing	0	0	0
1/1/2020	10:00	Port of Call	Clear	10kts	22°C	75%	1013	10km	0-1000	Calm	None	Low	Nothing	0	0	0
1/1/2020	10:30	Port of Call	Clear	10kts	22°C	75%	1013	10km	0-1000	Calm	None	Low	Nothing	0	0	0
1/1/2020	11:00	Port of Call	Clear	10kts	22°C	75%	1013	10km	0-1000	Calm	None	Low	Nothing	0	0	0
1/1/2020	11:30	Port of Call	Clear	10kts	22°C	75%	1013	10km	0-1000	Calm	None	Low	Nothing	0	0	0
1/1/2020	12:00	Port of Call	Clear	10kts	22°C	75%	1013	10km	0-1000	Calm	None	Low	Nothing	0	0	0
1/1/2020	12:30	Port of Call	Clear	10kts	22°C	75%	1013	10km	0-1000	Calm	None	Low	Nothing	0	0	0
1/1/2020	13:00	Port of Call	Clear	10kts	22°C	75%	1013	10km	0-1000	Calm	None	Low	Nothing	0	0	0
1/1/2020	13:30	Port of Call	Clear	10kts	22°C	75%	1013	10km	0-1000	Calm	None	Low	Nothing	0	0	0
1/1/2020	14:00	Port of Call	Clear	10kts	22°C	75%	1013	10km	0-1000	Calm	None	Low	Nothing	0	0	0
1/1/2020	14:30	Port of Call	Clear	10kts	22°C	75%	1013	10km	0-1000	Calm	None	Low	Nothing	0	0	0
1/1/2020	15:00	Port of Call	Clear	10kts	22°C	75%	1013	10km	0-1000	Calm	None	Low	Nothing	0	0	0
1/1/2020	15:30	Port of Call	Clear	10kts	22°C	75%	1013	10km	0-1000	Calm	None	Low	Nothing	0	0	0
1/1/2020	16:00	Port of Call	Clear	10kts	22°C	75%	1013	10km	0-1000	Calm	None	Low	Nothing	0	0	0
1/1/2020	16:30	Port of Call	Clear	10kts	22°C	75%	1013	10km	0-1000	Calm	None	Low	Nothing	0	0	0
1/1/2020	17:00	Port of Call	Clear	10kts	22°C	75%	1013	10km	0-1000	Calm	None	Low	Nothing	0	0	0
1/1/2020	17:30	Port of Call	Clear	10kts	22°C	75%	1013	10km	0-1000	Calm	None	Low	Nothing	0	0	0
1/1/2020	18:00	Port of Call	Clear	10kts	22°C	75%	1013	10km	0-1000	Calm	None	Low	Nothing	0	0	0
1/1/2020	18:30	Port of Call	Clear	10kts	22°C	75%	1013	10km	0-1000	Calm	None	Low	Nothing	0	0	0
1/1/2020	19:00	Port of Call	Clear	10kts	22°C	75%	1013	10km	0-1000	Calm	None	Low	Nothing	0	0	0
1/1/2020	19:30	Port of Call	Clear	10kts	22°C	75%	1013	10km	0-1000	Calm	None	Low	Nothing	0	0	0
1/1/2020	20:00	Port of Call	Clear	10kts	22°C	75%	1013	10km	0-1000	Calm	None	Low	Nothing	0	0	0

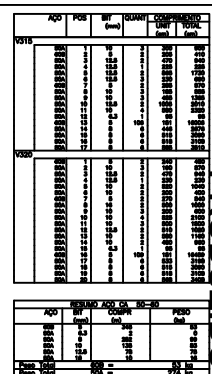
COCERED No. = 000		000 0 0 0001
000 Icet Laboratório Icet 000 Forma Laje cobertura		005 0 0 005
06/09/2001	000 00-14-14-01-000	000 0 0 00



ADP	POS	MT	QUANT	UNID	VALOR UNIT	VALOR TOTAL
V301						
V302						
V303						
V304						
V307						
V308						
V309						
V314						
V322						
V323						

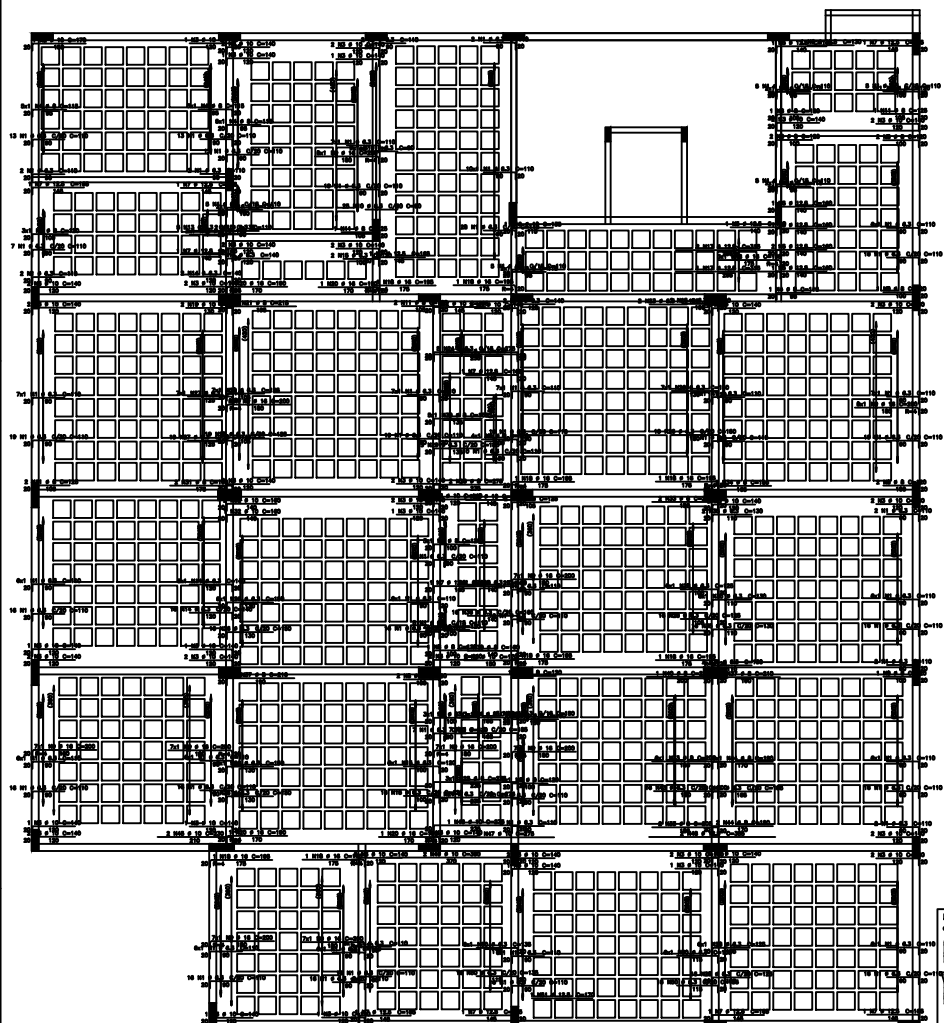
ADP	POS	MT	QUANT	UNID	VALOR UNIT	VALOR TOTAL
V301						
V302						
V303						
V304						
V307						
V308						
V309						
V314						
V322						
V323						

PROJETO	0001
ICET	006
Laboratório ICET	00
V301 / V302 / V303 / V304	
V307 / V308 / V309	
V314 / V322 / V323	
15/05/2001	15/05/2001

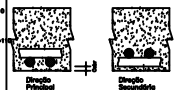


Formulario		Página 2 de 2
Nº de 30 SP%		0001
Código Icet		DE F.F.
Nº Laboratório Icet		008
Nº V315 / V320		DE F.F. 00
Data/Emissão	Sigla	Assinatura
06/09/2021	TAD	007

18




Detalhe genérico do alojamento de armaduras positivas



112 MRB # 8 C/20 C-1140

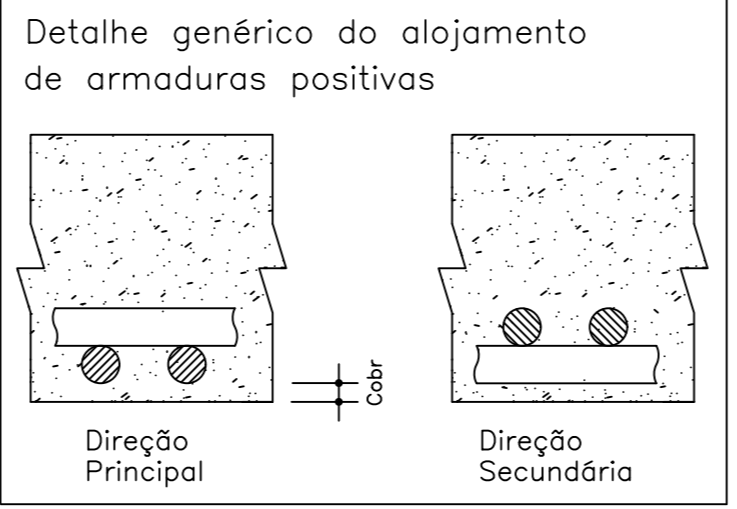
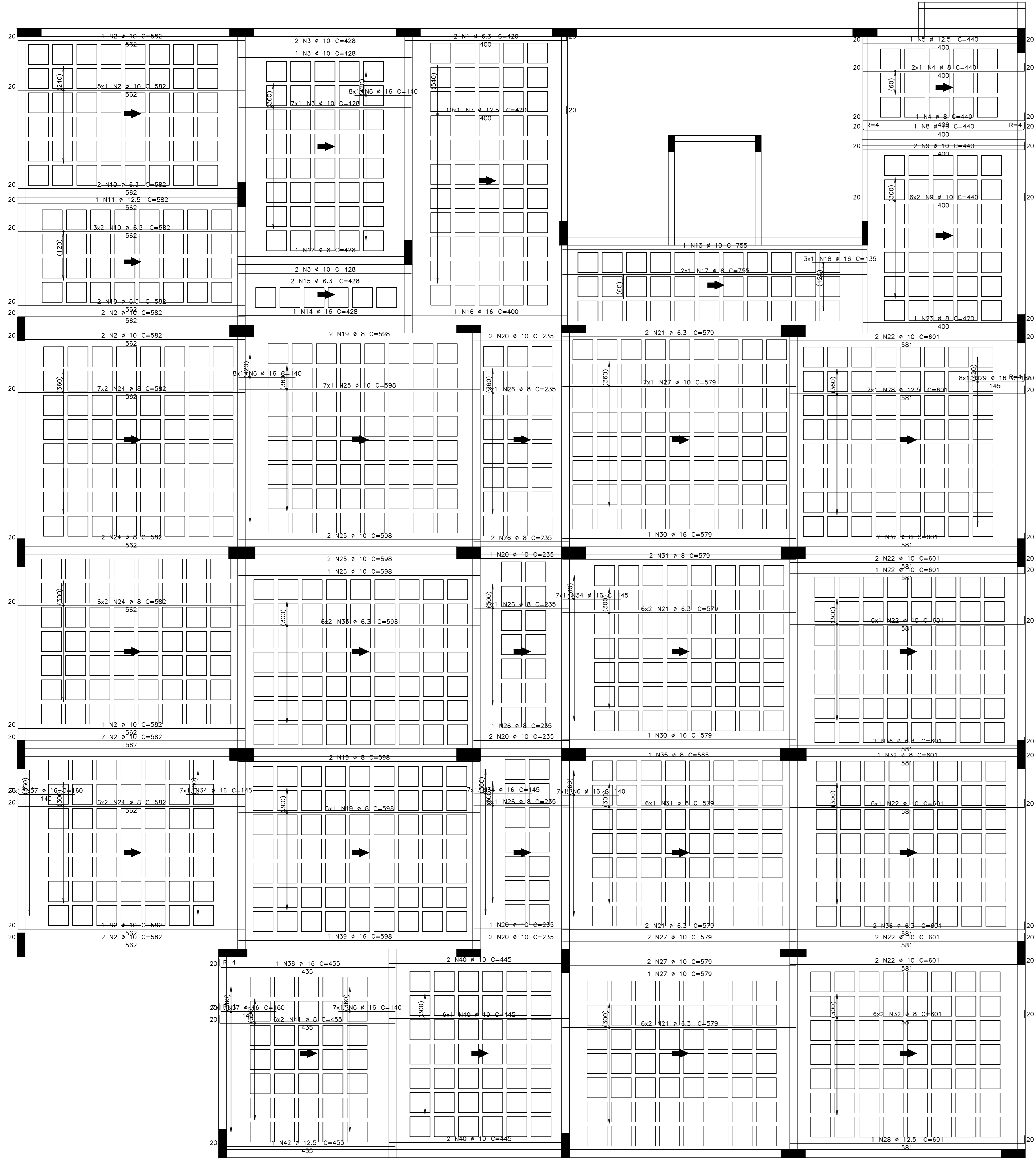
[illegible]

AGE	HT (mm)	COMPR (mm)	PESSO (kg)
2000	8	1281	214
2004	6.3	1276	312
2004	6	130	69
2004	10	170	64
2004	12.6	49	47
2004	18	178	378
Peso (kg)		508 = 178	214 kg

					
Armazenagem Má = 30 MPa			GRUPO 1 0001		
Código Icet			GRUPO 2 009		
Descrição Laboratório Icet					
Observações					
loja termox - Armadura negativa principal					
Data de emissão		Assinatura		Nº DE FOLHA	
12/04/2012		[Assinatura]		007	

laje terreo – Armadura positiva principal

1X



AÇO	POS	BIT (mm)	QUANT	COMPRIMENTO	
				UNIT (cm)	TOTAL (cm)
laje terreo – Armadura positiva principal					
50A	1	6,3	2	420	840
50A	2	10	16	362	9312
50A	3	10	12	428	5136
50A	4	8	3	440	1320
50A	5	12,5	1	440	440
50A	6	16	30	140	4200
50A	7	12,5	10	420	4200
50A	8	16	14	440	440
50A	9	10	14	440	6160
50A	10	6,3	10	582	5820
50A	11	12,5	1	582	582
50A	12	8	1	428	428
50A	13	10	1	755	755
50A	14	16	1	428	428
50A	15	6,3	2	428	856
50A	16	16	1	400	400
50A	17	8	2	755	1510
50A	18	16	3	135	405
50A	19	8	10	598	5980
50A	20	10	8	235	1880
50A	21	6,3	28	579	16212
50A	22	10	21	601	12621
50A	23	8	1	420	420
50A	24	8	40	582	23280
50A	25	10	12	598	7176
50A	26	8	22	235	5170
50A	27	10	12	579	6948
50A	28	12,5	8	601	4808
50A	29	16	8	165	1320
50A	30	16	2	579	1158
50A	31	8	8	579	4632
50A	32	8	15	601	9015
50A	33	6,3	12	598	7176
50A	34	16	21	145	3045
50A	35	8	1	365	365
50A	36	6,3	4	601	2404
50A	37	16	14	160	2240
50A	38	16	1	455	455
50A	39	16	1	598	598
50A	40	10	10	445	4450
50A	41	8	12	455	5460
50A	42	12,5	1	455	455

RESUMO AÇO CA 50-60			
AÇO	BIT (mm)	COMPR (m)	PESO (kg)
50A	6.3	333	82
50A	8	578	228
50A	10	544	356
50A	12.5	105	101
50A	16	147	232
Peso Total 50A =			979 kg

CONCRETO

fck = 25 MPa

CLIENTE

Icet

OBRA

Laboratório icet

TÍTULO

0001

DES. N.º

011

REV. N.º

00

09/06/2021

1:50

DESIGNO

ICE-LAJA-LAJ-013-R00

COORD.

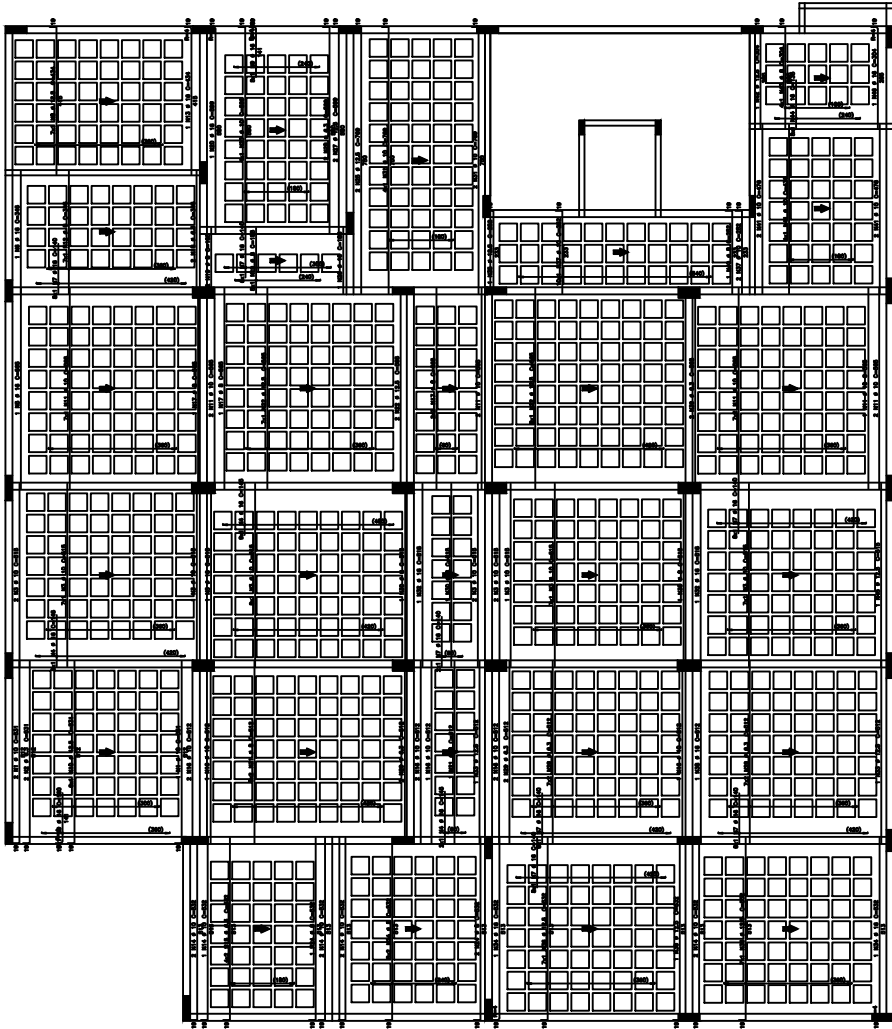
ENG.º

laje terreo – Armadura positiva principal

PRODUIZIDO POR UMA VERSAO DO AUTODESK PARA ESTUDANTES

laje terreo - Armadura positiva secundaria

1X



Item	Qtd	Unid	Valor Unit	Valor Total
1	1	m²	1.50	1.50
2	1	m²	1.50	1.50
3	1	m²	1.50	1.50
4	1	m²	1.50	1.50
5	1	m²	1.50	1.50
6	1	m²	1.50	1.50
7	1	m²	1.50	1.50
8	1	m²	1.50	1.50
9	1	m²	1.50	1.50
10	1	m²	1.50	1.50

Item	Qtd	Unid	Valor Unit	Valor Total
1	1	m²	1.50	1.50
2	1	m²	1.50	1.50
3	1	m²	1.50	1.50
4	1	m²	1.50	1.50
5	1	m²	1.50	1.50
6	1	m²	1.50	1.50
7	1	m²	1.50	1.50
8	1	m²	1.50	1.50
9	1	m²	1.50	1.50
10	1	m²	1.50	1.50

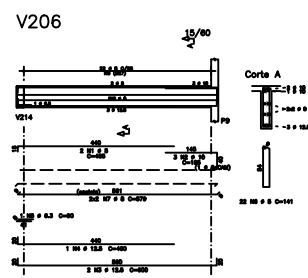
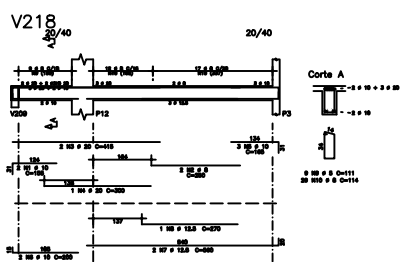
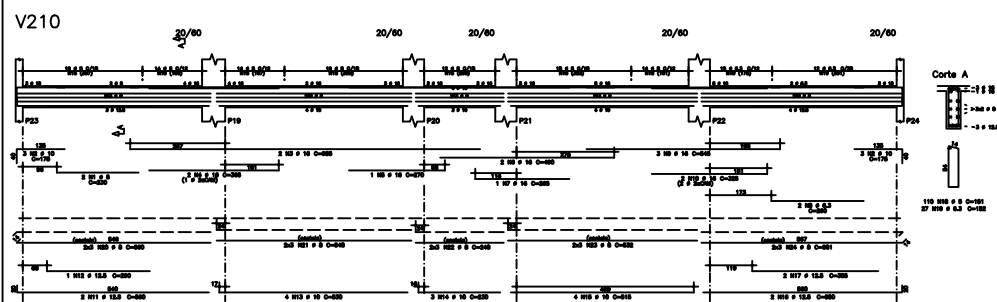
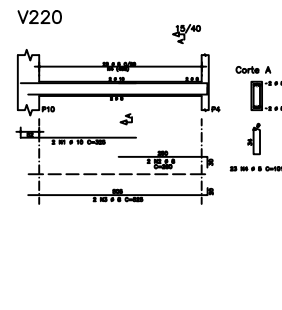
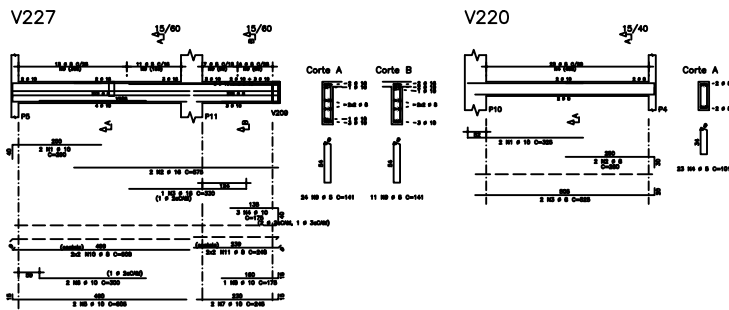
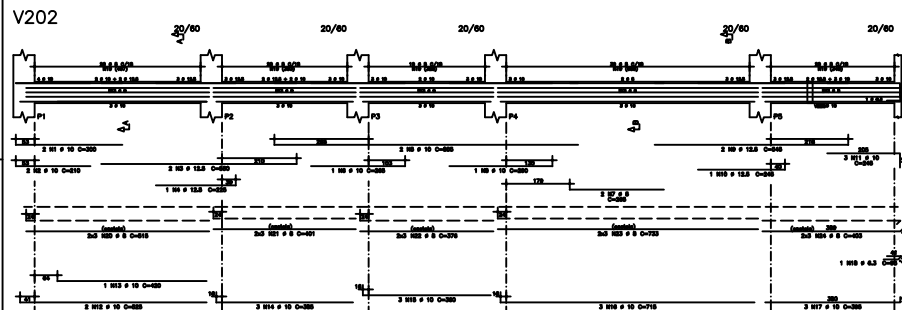
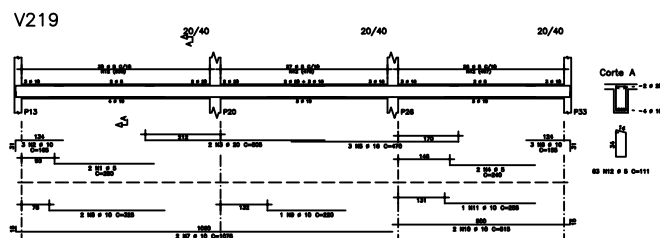
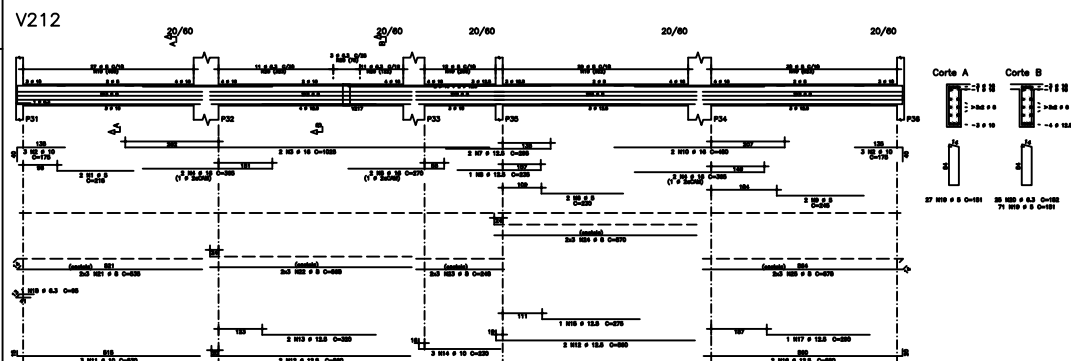
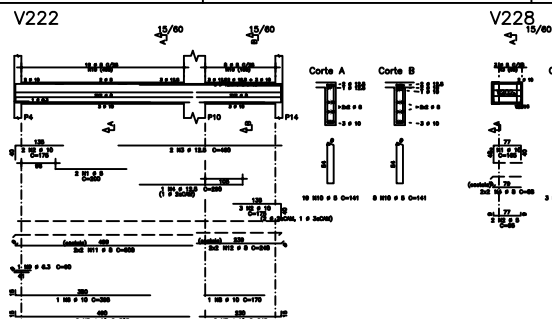
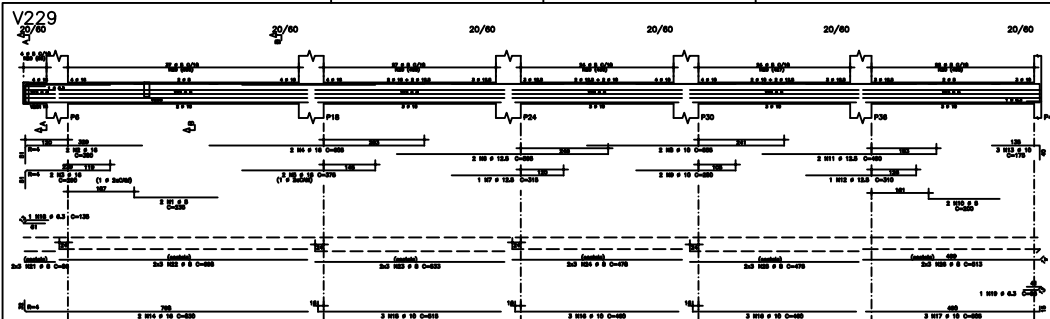
0001	
Icet	
Laboratório Icet	
012	
00	
laje terreo - Armadura positiva secundaria	
01-01-01-01-01	



Name	Age	Sex	Height cm	Weight				BMI
				kg	lb	kg	lb	
1	18	M	175	70	154	70	154	22.2
2	19	F	160	55	121	55	121	20.9
3	20	M	180	80	176	80	176	24.7
4	21	F	165	60	132	60	132	22.0
5	22	M	170	65	143	65	143	22.6
6	23	F	155	50	110	50	110	20.3
7	24	M	185	90	198	90	198	26.1
8	25	F	160	55	121	55	121	20.9
9	26	M	175	70	154	70	154	22.2
10	27	F	150	45	99	45	99	19.0
11	28	M	180	80	176	80	176	24.7
12	29	F	165	60	132	60	132	22.0
13	30	M	170	65	143	65	143	22.6
14	31	F	155	50	110	50	110	20.3
15	32	M	185	90	198	90	198	26.1
16	33	F	160	55	121	55	121	20.9
17	34	M	175	70	154	70	154	22.2
18	35	F	150	45	99	45	99	19.0
19	36	M	180	80	176	80	176	24.7
20	37	F	165	60	132	60	132	22.0
21	38	M	170	65	143	65	143	22.6
22	39	F	155	50	110	50	110	20.3
23	40	M	185	90	198	90	198	26.1
24	41	F	160	55	121	55	121	20.9
25	42	M	175	70	154	70	154	22.2
26	43	F	150	45	99	45	99	19.0
27	44	M	180	80	176	80	176	24.7
28	45	F	165	60	132	60	132	22.0
29	46	M	170	65	143	65	143	22.6
30	47	F	155	50	110	50	110	20.3
31	48	M	185	90	198	90	198	26.1
32	49	F	160	55	121	55	121	20.9
33	50	M	175	70	154	70	154	22.2
34	51	F	150	45	99	45	99	19.0
35	52	M	180	80	176	80	176	24.7
36	53	F	165	60	132	60	132	22.0
37	54	M	170	65	143	65	143	22.6
38	55	F	155	50	110	50	110	20.3
39	56	M	185	90	198	90	198	26.1
40	57	F	160	55	121	55	121	20.9
41	58	M	175	70	154	70	154	22.2
42	59	F	150	45	99	45	99	19.0
43	60	M	180	80	176	80	176	24.7
44	61	F	165	60	132	60	132	22.0
45	62	M	170	65	143	65	143	22.6
46	63	F	155	50	110	50	110	20.3
47	64	M	185	90	198	90	198	26.1
48	65	F	160	55	121	55	121	20.9
49	66	M	175	70	154	70	154	22.2
50	67	F	150	45	99	45	99	19.0
51	68	M	180	80	176	80	176	24.7
52	69	F	165	60	132	60	132	22.0
53	70	M	170	65	143	65	143	22.6
54	71	F	155	50	110	50	110	20.3
55	72	M	185	90	198	90	198	26.1
56	73	F	160	55	121	55	121	20.9
57	74	M						

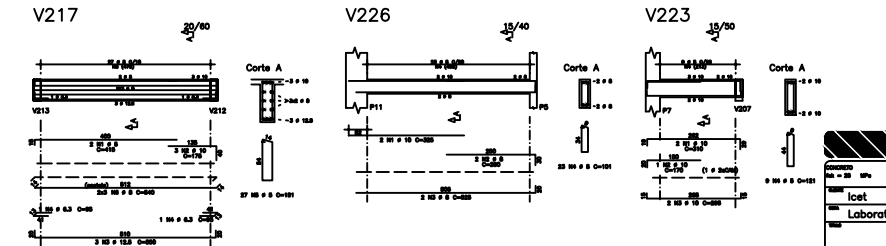
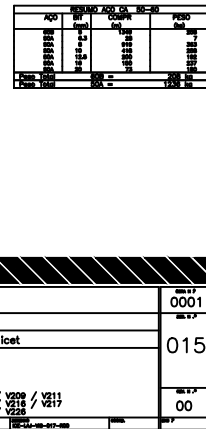
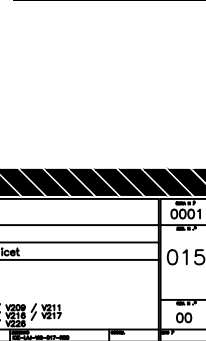
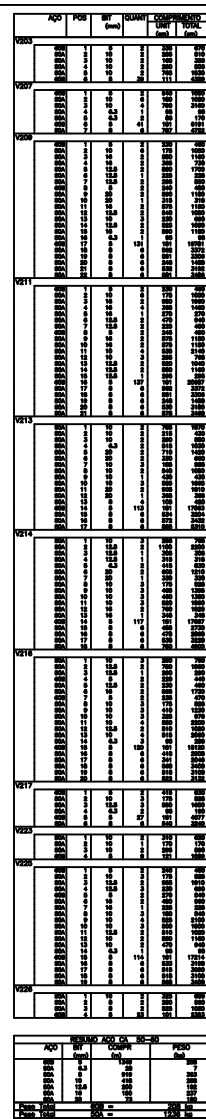
Date	Time	Temp	Wind				Dir	Speed	Dir	Speed	Dir	Speed
			Dir	Speed	Dir	Speed						
1/1/01	0000	10.0	000	0.0	000	0.0	000	0.0	000	0.0	000	0.0
1/1/01	0100	10.0	000	0.0	000	0.0	000	0.0	000	0.0	000	0.0
1/1/01	0200	10.0	000	0.0	000	0.0	000	0.0	000	0.0	000	0.0
1/1/01	0300	10.0	000	0.0	000	0.0	000	0.0	000	0.0	000	0.0
1/1/01	0400	10.0	000	0.0	000	0.0	000	0.0	000	0.0	000	0.0
1/1/01	0500	10.0	000	0.0	000	0.0	000	0.0	000	0.0	000	0.0
1/1/01	0600	10.0	000	0.0	000	0.0	000	0.0	000	0.0	000	0.0
1/1/01	0700	10.0	000	0.0	000	0.0	000	0.0	000	0.0	000	0.0
1/1/01	0800	10.0	000	0.0	000	0.0	000	0.0	000	0.0	000	0.0
1/1/01	0900	10.0	000	0.0	000	0.0	000	0.0	000	0.0	000	0.0
1/1/01	1000	10.0	000	0.0	000	0.0	000	0.0	000	0.0	000	0.0
1/1/01	1100	10.0	000	0.0	000	0.0	000	0.0	000	0.0	000	0.0
1/1/01	1200	10.0	000	0.0	000	0.0	000	0.0	000	0.0	000	0.0
1/1/01	1300	10.0	000	0.0	000	0.0	000	0.0	000	0.0	000	0.0
1/1/01	1400	10.0	000	0.0	000	0.0	000	0.0	000	0.0	000	0.0
1/1/01	1500	10.0	000	0.0	000	0.0	000	0.0	000	0.0	000	0.0
1/1/01	1600	10.0	000	0.0	000	0.0	000	0.0	000	0.0	000	0.0
1/1/01	1700	10.0	000	0.0	000	0.0	000	0.0	000	0.0	000	0.0
1/1/01	1800	10.0	000	0.0	000	0.0	000	0.0	000	0.0	000	0.0
1/1/01	1900	10.0	000	0.0	000	0.0	000	0.0	000	0.0	000	0.0
1/1/01	2000	10.0	000	0.0	000	0.0	000	0.0	000	0.0	000	0.0
1/1/01	2100	10.0	000	0.0	000	0.0	000	0.0	000	0.0	000	0.0
1/1/01	2200	10.0	000	0.0	000	0.0	000	0.0	000	0.0	000	0.0
1/1/01	2300	10.0	000	0.0	000	0.0	000	0.0	000	0.0	000	0.0

[illegible]

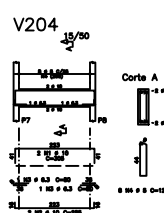
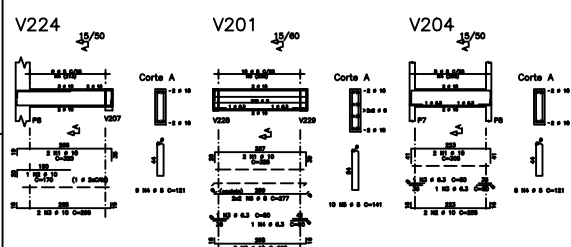
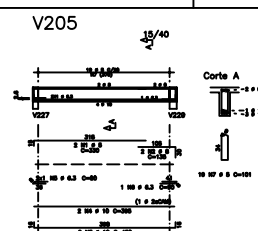
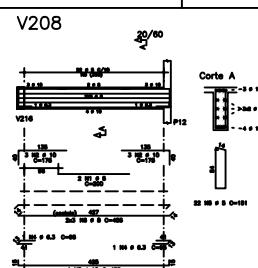
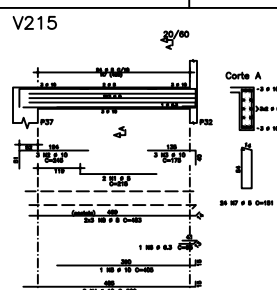
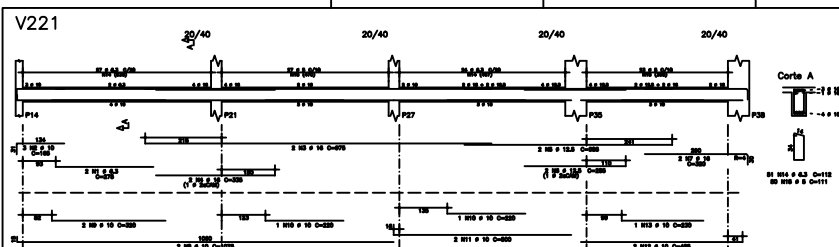


ACQ	POS	QUANT	COMPRIMENTO	ÁREA	VOL
1	1	1	1	1	1
2	2	2	2	2	2
3	3	3	3	3	3
4	4	4	4	4	4
5	5	5	5	5	5
6	6	6	6	6	6
7	7	7	7	7	7
8	8	8	8	8	8
9	9	9	9	9	9
10	10	10	10	10	10
11	11	11	11	11	11
12	12	12	12	12	12
13	13	13	13	13	13
14	14	14	14	14	14
15	15	15	15	15	15
16	16	16	16	16	16
17	17	17	17	17	17
18	18	18	18	18	18
19	19	19	19	19	19
20	20	20	20	20	20
21	21	21	21	21	21
22	22	22	22	22	22
23	23	23	23	23	23
24	24	24	24	24	24
25	25	25	25	25	25
26	26	26	26	26	26
27	27	27	27	27	27
28	28	28	28	28	28
29	29	29	29	29	29
30	30	30	30	30	30
31	31	31	31	31	31
32	32	32	32	32	32
33	33	33	33	33	33
34	34	34	34	34	34
35	35	35	35	35	35
36	36	36	36	36	36
37	37	37	37	37	37
38	38	38	38	38	38
39	39	39	39	39	39
40	40	40	40	40	40
41	41	41	41	41	41
42	42	42	42	42	42
43	43	43	43	43	43
44	44	44	44	44	44
45	45	45	45	45	45
46	46	46	46	46	46
47	47	47	47	47	47
48	48	48	48	48	48
49	49	49	49	49	49
50	50	50	50	50	50
51	51	51	51	51	51
52	52	52	52	52	52
53	53	53	53	53	53
54	54	54	54	54	54
55	55	55	55	55	55
56	56	56	56	56	56
57	57	57	57	57	57
58	58	58	58	58	58
59	59	59	59	59	59
60	60	60	60	60	60
61	61	61	61	61	61
62	62	62	62	62	62
63	63	63	63	63	63
64	64	64	64	64	64
65	65	65	65	65	65
66	66	66	66	66	66
67	67	67	67	67	67
68	68	68	68	68	68
69	69	69	69	69	69
70	70	70	70	70	70
71	71	71	71	71	71
72	72	72	72	72	72
73	73	73	73	73	73
74	74	74	74	74	74
75	75	75	75	75	75
76	76	76	76	76	76
77	77	77	77	77	77
78	78	78	78	78	78
79	79	79	79	79	79
80	80	80	80	80	80
81	81	81	81	81	81
82	82	82	82	82	82
83	83	83	83	83	83
84	84	84	84	84	84
85	85	85	85	85	85
86	86	86	86	86	86
87	87	87	87	87	87
88	88	88	88	88	88
89	89	89	89	89	89
90	90	90	90	90	90
91	91	91	91	91	91
92	92	92	92	92	92
93	93	93	93	93	93
94	94	94	94	94	94
95	95	95	95	95	95
96	96	96	96	96	96
97	97	97	97	97	97
98	98	98	98	98	98
99	99	99	99	99	99
100	100	100	100	100	100

PROJETO	0001
FECH	014
LABORATÓRIO	00
V229 / V220 / V210 / V212	
V227 / V219 / V200 / V225	
10/05/2001	100-100-100-100



PRODUTIVO POR UMA VERSAO DO AUTODESK PARA ESTUDANTES



Item	Qtd	Unid	Valor Unit	Valor Total
V201	1	un	100,00	100,00
V204	1	un	100,00	100,00
V205	1	un	100,00	100,00
V208	1	un	100,00	100,00
V215	1	un	100,00	100,00
V221	1	un	100,00	100,00
V224	1	un	100,00	100,00

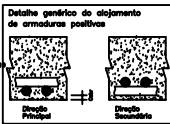
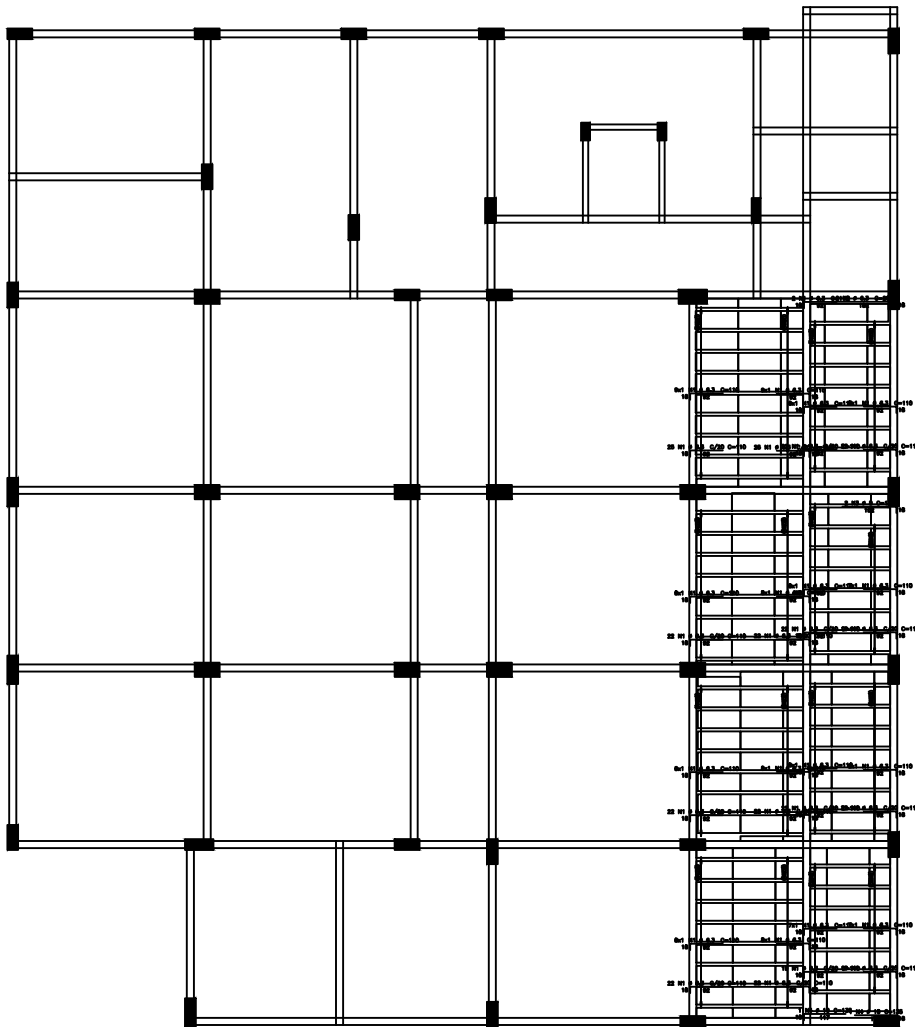
Item	Qtd	Unid	Valor Unit	Valor Total
V201	1	un	100,00	100,00
V204	1	un	100,00	100,00
V205	1	un	100,00	100,00
V208	1	un	100,00	100,00
V215	1	un	100,00	100,00
V221	1	un	100,00	100,00
V224	1	un	100,00	100,00

PRODUTIVO POR UMA VERSAO DO AUTODESK PARA ESTUDANTES

0001	
icet	
Laboratório icet	
016	
00	
V201 / V204 / V205 / V208	
V215 / V221 / V224	

Fundacao - Armadura negativa principal

1X



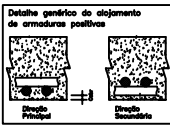
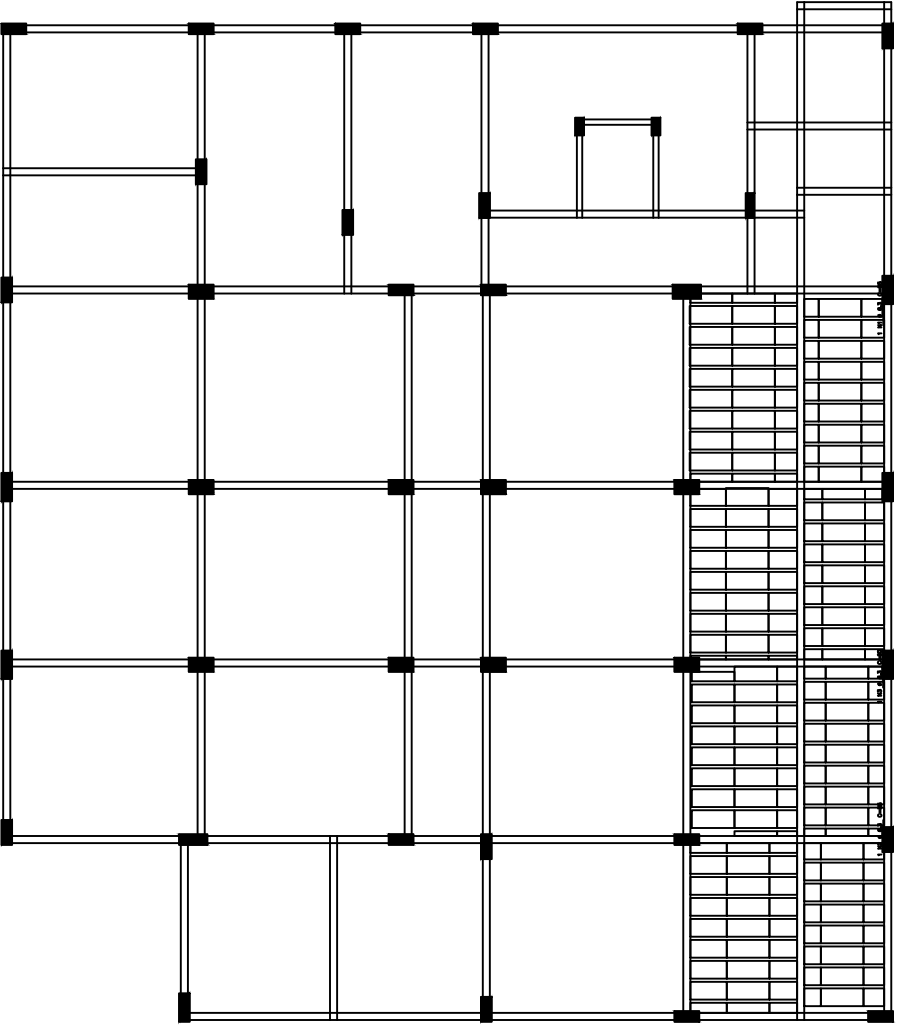
ITEM	QUANTIDADE	UNIDADE	VALOR UNITARIO	VALOR TOTAL
1	10	m	100,00	1000,00
2	10	m	100,00	1000,00
3	10	m	100,00	1000,00
4	10	m	100,00	1000,00
5	10	m	100,00	1000,00
6	10	m	100,00	1000,00
7	10	m	100,00	1000,00
8	10	m	100,00	1000,00
9	10	m	100,00	1000,00
10	10	m	100,00	1000,00

0001	0001
0001	0001
0001	0001
0001	0001
0001	0001
0001	0001
0001	0001
0001	0001
0001	0001
0001	0001

PRODUIZIDO POR UMA VERSAO DO AUTODESK PARA ESTUDANTES

Fundacao - Armadura negativa secundaria

1X



ADT	POS	SE	QUANT	COMPRIMENTO	AREA
Fundacao - Armadura negativa secundaria					
ADT	POS	SE	QUANT	COMPRIMENTO	AREA
1	1	1	1	1	1

ADT	POS	SE	QUANT	COMPRIMENTO	AREA
Fundacao - Armadura negativa secundaria					
ADT	POS	SE	QUANT	COMPRIMENTO	AREA
1	1	1	1	1	1

0001

icet

018

Laboratório icet

00

Fundacao - Armadura negativa secundaria

00

08/08/2021


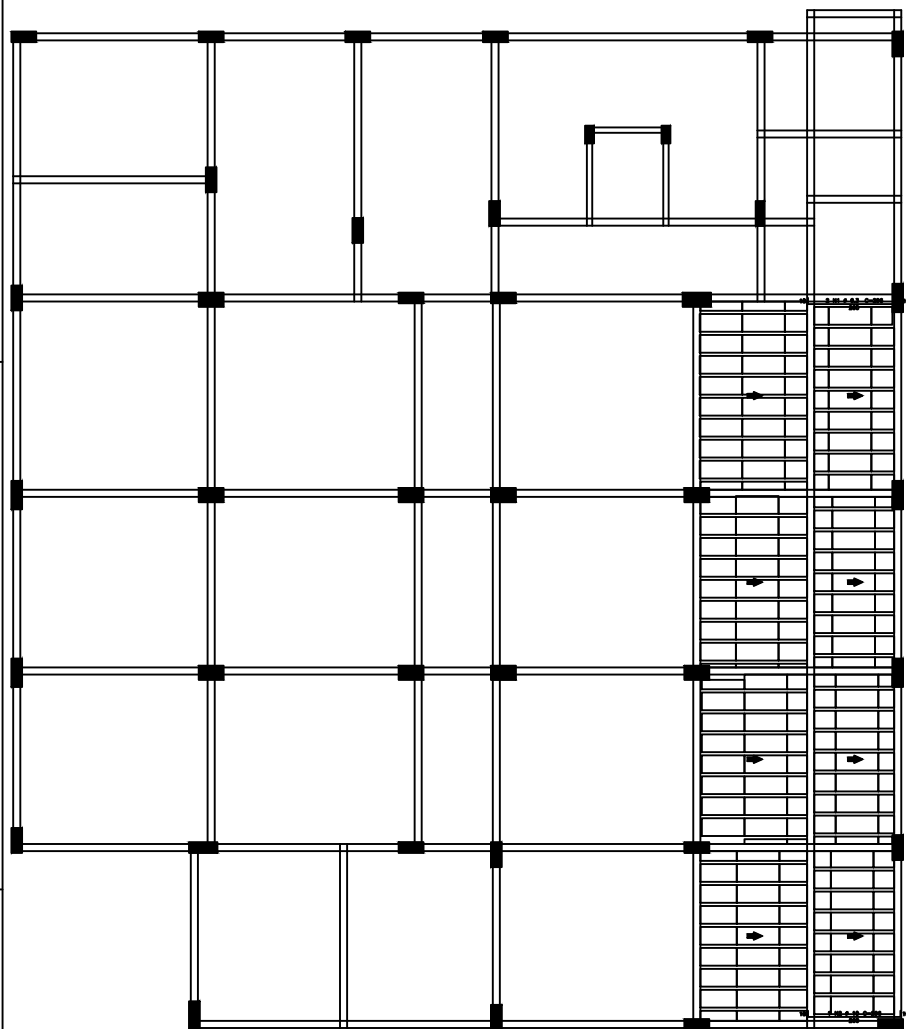
10:00

08-08-2021

001

PRODUIZIDO POR UMA VERSAO DO AUTODESK PARA ESTUDANTES

1X

[illegible]

Estimativa de consumo de blocos			
Fabricante	Inteiros	Quebrados	Total
1234 (Unidades) 1118/105/100	185	182	367

Projeto de Adoção de vigas trepadas
Barras e curvas

VT1A 1 ^a viga	
VT2A 2 ^a viga	
VT3A 3 ^a viga	
VT4A 4 ^a viga	
VT5A 5 ^a viga	
VT6A 6 ^a viga	
VT7A 7 ^a viga	
VT8A 8 ^a viga	
VT9A 9 ^a viga	

ACO	POS	BIT (mm)	QUANT	COMPRESSÃO UNIT (mm)	TOTAL (mm)
Fundação - Armadura superior articulada					
ASA	2	6,3	1	300	307
ASA	2	10	1	300	310

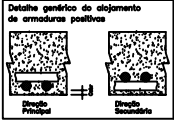
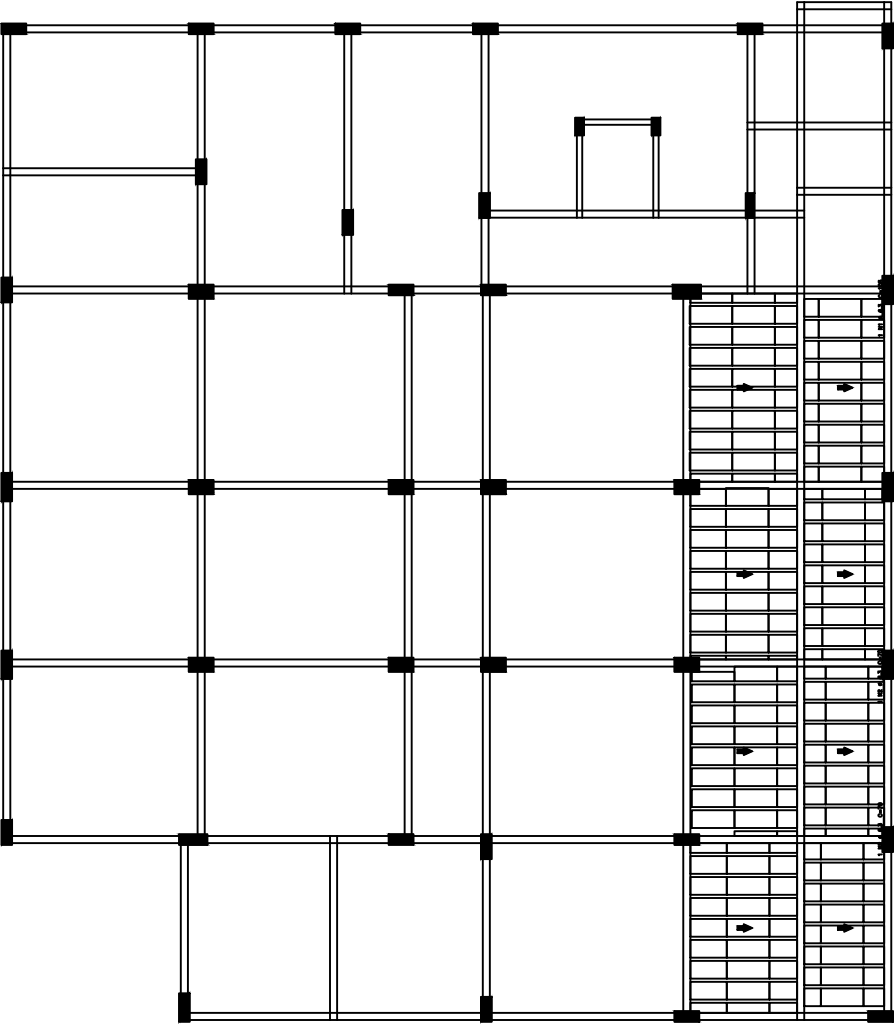
RESUMO AÇO CL. 50-50				
ACO	BIT (mm)	COMPRESSÃO (mm)	PESO (kg)	
ASA	6,3	8	1	
ASA	10	8	1	
Peso		ASA	2	2

Armadura No = 33 MPa		ML 7.7 0001
Cota Icet		ML 7.7 019
Laboratório icet		
Fundacao - Armadura positiva principal		ML 7.7 00
05/04/2021	160	057

PRODUIZIDO POR UMA VERSAO DO AUTODESK PARA ESTUDANTES

Fundacao - Armadura positiva secundaria

1X

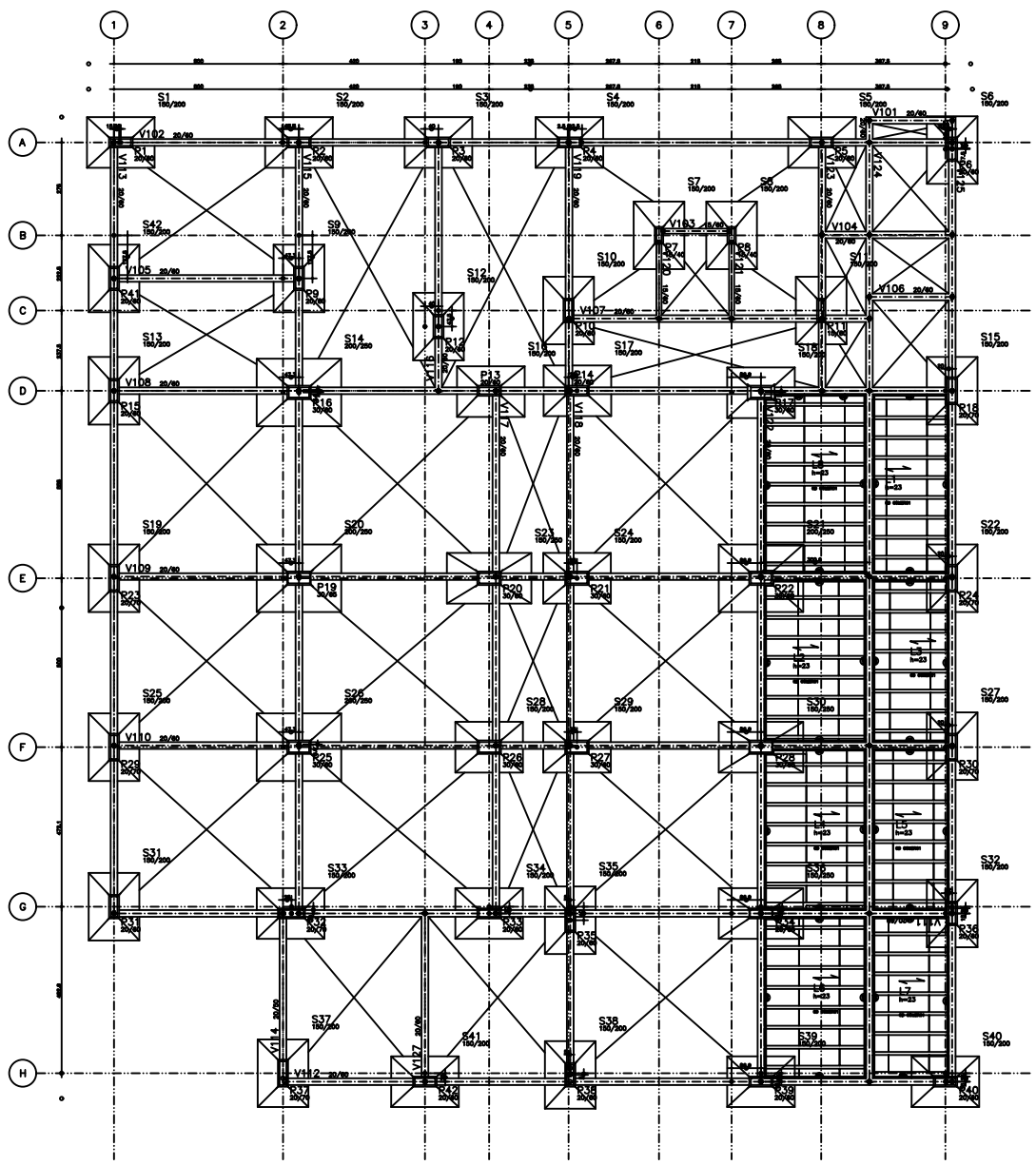


ADT	POS	SE	QUANT	COMPRIMENTO
Fundacao - Armadura positiva secundaria				
ADT	POS	SE	QUANT	COMPRIMENTO
ADT	POS	SE	QUANT	COMPRIMENTO

0001	
Icet	
Laboratório Icet	
020	
Fundacao - Armadura positiva secundaria	
00	

PRODUIZIDO POR UMA VERSAO DO AUTODESK PARA ESTUDANTES

PRODUIZIDO POR UMA VERSAO DO AUTODESK PARA ESTUDANTES



Relatório de Materiais			
Piso	Quantidade	Unidade	Valor
1	1.000	m³	1.000,00
2	2.000	m³	2.000,00
3	3.000	m³	3.000,00
4	4.000	m³	4.000,00
5	5.000	m³	5.000,00
6	6.000	m³	6.000,00
7	7.000	m³	7.000,00
8	8.000	m³	8.000,00
9	9.000	m³	9.000,00
10	10.000	m³	10.000,00
11	11.000	m³	11.000,00
12	12.000	m³	12.000,00
13	13.000	m³	13.000,00
14	14.000	m³	14.000,00
15	15.000	m³	15.000,00
16	16.000	m³	16.000,00
17	17.000	m³	17.000,00
18	18.000	m³	18.000,00
19	19.000	m³	19.000,00
20	20.000	m³	20.000,00
21	21.000	m³	21.000,00
22	22.000	m³	22.000,00
23	23.000	m³	23.000,00
24	24.000	m³	24.000,00
25	25.000	m³	25.000,00
26	26.000	m³	26.000,00
27	27.000	m³	27.000,00
28	28.000	m³	28.000,00
29	29.000	m³	29.000,00
30	30.000	m³	30.000,00
31	31.000	m³	31.000,00
32	32.000	m³	32.000,00
33	33.000	m³	33.000,00
34	34.000	m³	34.000,00
35	35.000	m³	35.000,00
36	36.000	m³	36.000,00
37	37.000	m³	37.000,00
38	38.000	m³	38.000,00
39	39.000	m³	39.000,00
40	40.000	m³	40.000,00

Relatório de Materiais			
Piso	Quantidade	Unidade	Valor
1	1.000	m³	1.000,00
2	2.000	m³	2.000,00
3	3.000	m³	3.000,00
4	4.000	m³	4.000,00
5	5.000	m³	5.000,00
6	6.000	m³	6.000,00
7	7.000	m³	7.000,00
8	8.000	m³	8.000,00
9	9.000	m³	9.000,00
10	10.000	m³	10.000,00
11	11.000	m³	11.000,00
12	12.000	m³	12.000,00
13	13.000	m³	13.000,00
14	14.000	m³	14.000,00
15	15.000	m³	15.000,00
16	16.000	m³	16.000,00
17	17.000	m³	17.000,00
18	18.000	m³	18.000,00
19	19.000	m³	19.000,00
20	20.000	m³	20.000,00
21	21.000	m³	21.000,00
22	22.000	m³	22.000,00
23	23.000	m³	23.000,00
24	24.000	m³	24.000,00
25	25.000	m³	25.000,00
26	26.000	m³	26.000,00
27	27.000	m³	27.000,00
28	28.000	m³	28.000,00
29	29.000	m³	29.000,00
30	30.000	m³	30.000,00
31	31.000	m³	31.000,00
32	32.000	m³	32.000,00
33	33.000	m³	33.000,00
34	34.000	m³	34.000,00
35	35.000	m³	35.000,00
36	36.000	m³	36.000,00
37	37.000	m³	37.000,00
38	38.000	m³	38.000,00
39	39.000	m³	39.000,00
40	40.000	m³	40.000,00

Relatório de Materiais			
Piso	Quantidade	Unidade	Valor
1	1.000	m³	1.000,00
2	2.000	m³	2.000,00
3	3.000	m³	3.000,00
4	4.000	m³	4.000,00
5	5.000	m³	5.000,00
6	6.000	m³	6.000,00
7	7.000	m³	7.000,00
8	8.000	m³	8.000,00
9	9.000	m³	9.000,00
10	10.000	m³	10.000,00
11	11.000	m³	11.000,00
12	12.000	m³	12.000,00
13	13.000	m³	13.000,00
14	14.000	m³	14.000,00
15	15.000	m³	15.000,00
16	16.000	m³	16.000,00
17	17.000	m³	17.000,00
18	18.000	m³	18.000,00
19	19.000	m³	19.000,00
20	20.000	m³	20.000,00
21	21.000	m³	21.000,00
22	22.000	m³	22.000,00
23	23.000	m³	23.000,00
24	24.000	m³	24.000,00
25	25.000	m³	25.000,00
26	26.000	m³	26.000,00
27	27.000	m³	27.000,00
28	28.000	m³	28.000,00
29	29.000	m³	29.000,00
30	30.000	m³	30.000,00
31	31.000	m³	31.000,00
32	32.000	m³	32.000,00
33	33.000	m³	33.000,00
34	34.000	m³	34.000,00
35	35.000	m³	35.000,00
36	36.000	m³	36.000,00
37	37.000	m³	37.000,00
38	38.000	m³	38.000,00
39	39.000	m³	39.000,00
40	40.000	m³	40.000,00

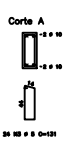
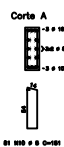
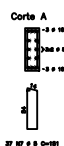
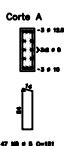
0001

021

00

00/00/0001

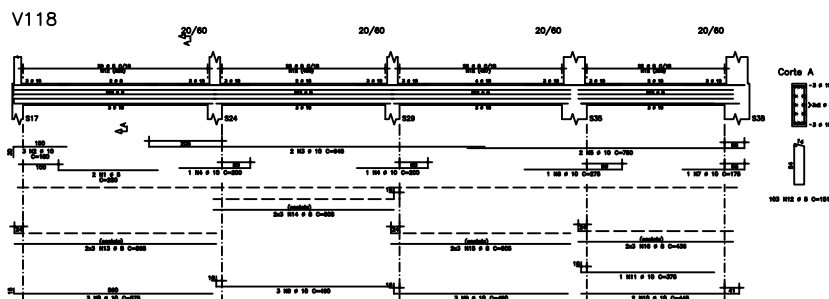
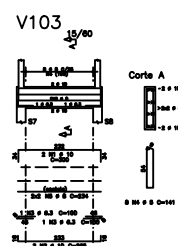
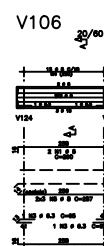
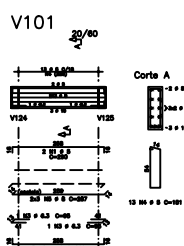
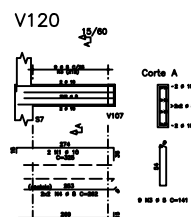
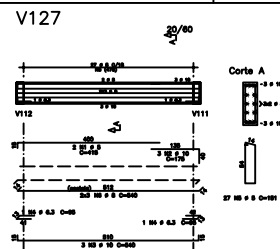
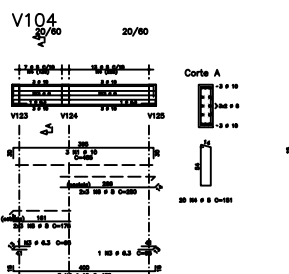
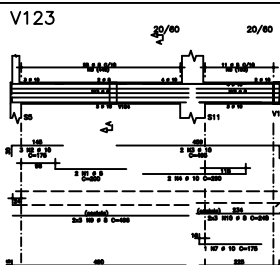
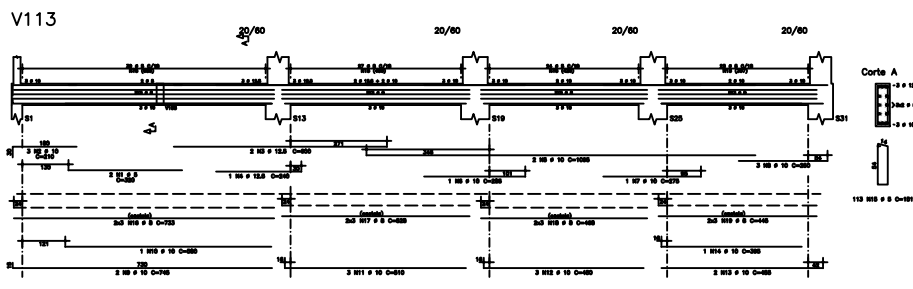
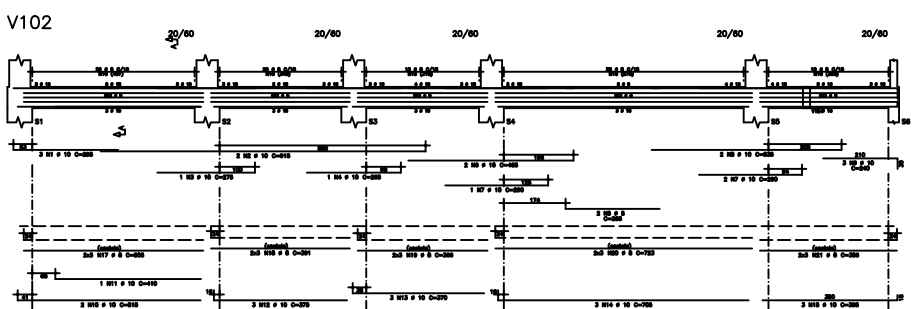
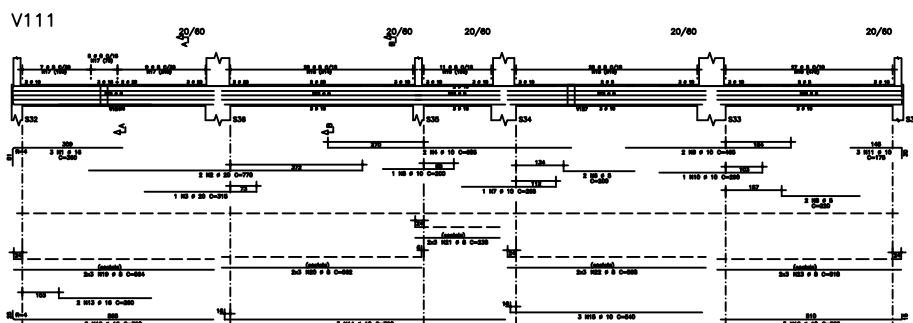
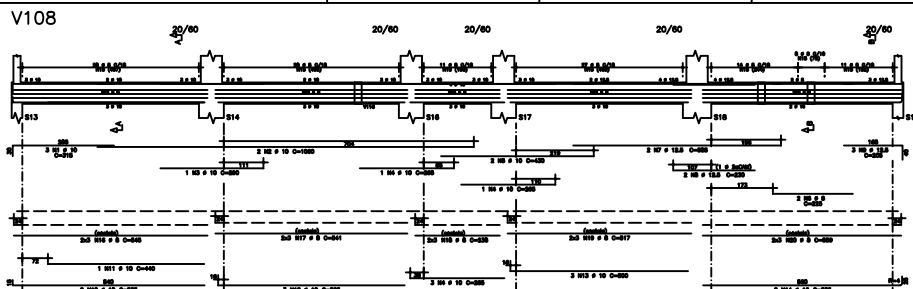
00/00/0001



RESUMO AÇO CA 80-80			
AÇO	BIT (mm)	COMPR (m)	PESO (kg)
ASA	8	1173	181
ASA	6,3	808	32
ASA	8	808	32
ASA	10	687	412
ASA	12,5	77	74
ASA	16	84	84
ASA	20	31	77
Peso (kg)	ASA =		181 kg
Peso (kg)	ASA =		1008 kg

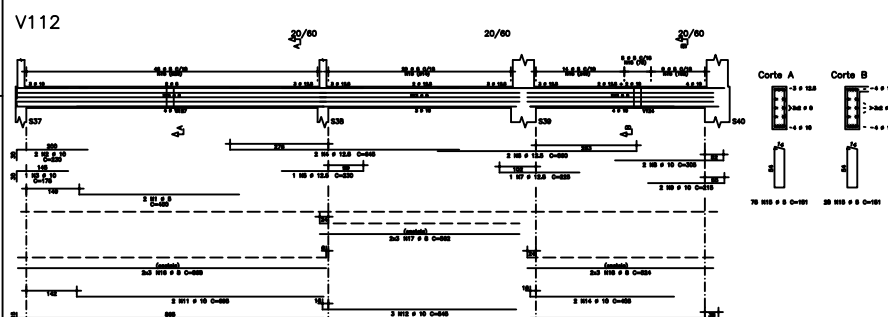
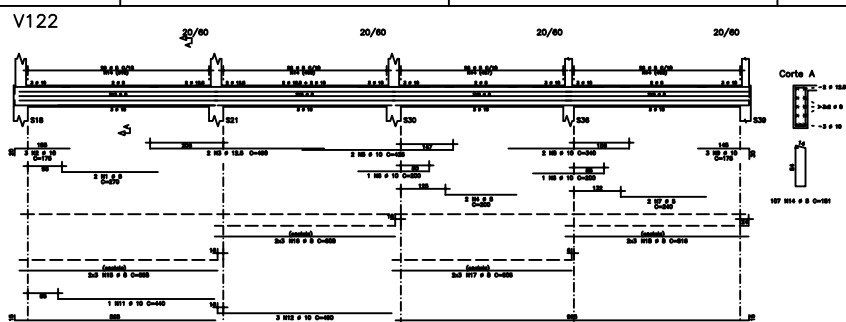
PRODUTIVO POR UMA VERSÃO DO AUTODESK PARA ESTUDANTES

PRODUIZIDO POR UMA VERSAO DO AUTODESK PARA ESTUDANTES



ADT	POS	MT	QUANT	COMPRIMENTO	AREA	VALOR
V101						
V102						
V103						
V104						
V105						
V106						
V107						
V108						
V109						
V110						
V111						
V112						
V113						
V114						
V115						
V116						
V117						
V118						
V119						
V120						
V121						
V122						
V123						
V124						
V125						
V126						
V127						
V128						
V129						
V130						
V131						
V132						
V133						
V134						
V135						
V136						
V137						
V138						
V139						
V140						
V141						
V142						
V143						
V144						
V145						
V146						
V147						
V148						
V149						
V150						
V151						
V152						
V153						
V154						
V155						
V156						
V157						
V158						
V159						
V160						
V161						
V162						
V163						
V164						
V165						
V166						
V167						
V168						
V169						
V170						
V171						
V172						
V173						
V174						
V175						
V176						
V177						
V178						
V179						
V180						
V181						
V182						
V183						
V184						
V185						
V186						
V187						
V188						
V189						
V190						
V191						
V192						
V193						
V194						
V195						
V196						
V197						
V198						
V199						
V200						

PROJETO	0001
ICET	023
Laboratório ICET	00
V101 / V102 / V103 / V104 V105 / V106 / V107 / V108 V109 / V110 / V111 / V112 V113 / V114 / V115 / V116 V117 / V118 / V119 / V120 V121 / V122 / V123 / V124 V125 / V126 / V127 / V128 V129 / V130 / V131 / V132 V133 / V134 / V135 / V136 V137 / V138 / V139 / V140 V141 / V142 / V143 / V144 V145 / V146 / V147 / V148 V149 / V150 / V151 / V152 V153 / V154 / V155 / V156 V157 / V158 / V159 / V160 V161 / V162 / V163 / V164 V165 / V166 / V167 / V168 V169 / V170 / V171 / V172 V173 / V174 / V175 / V176 V177 / V178 / V179 / V180 V181 / V182 / V183 / V184 V185 / V186 / V187 / V188 V189 / V190 / V191 / V192 V193 / V194 / V195 / V196 V197 / V198 / V199 / V200	00

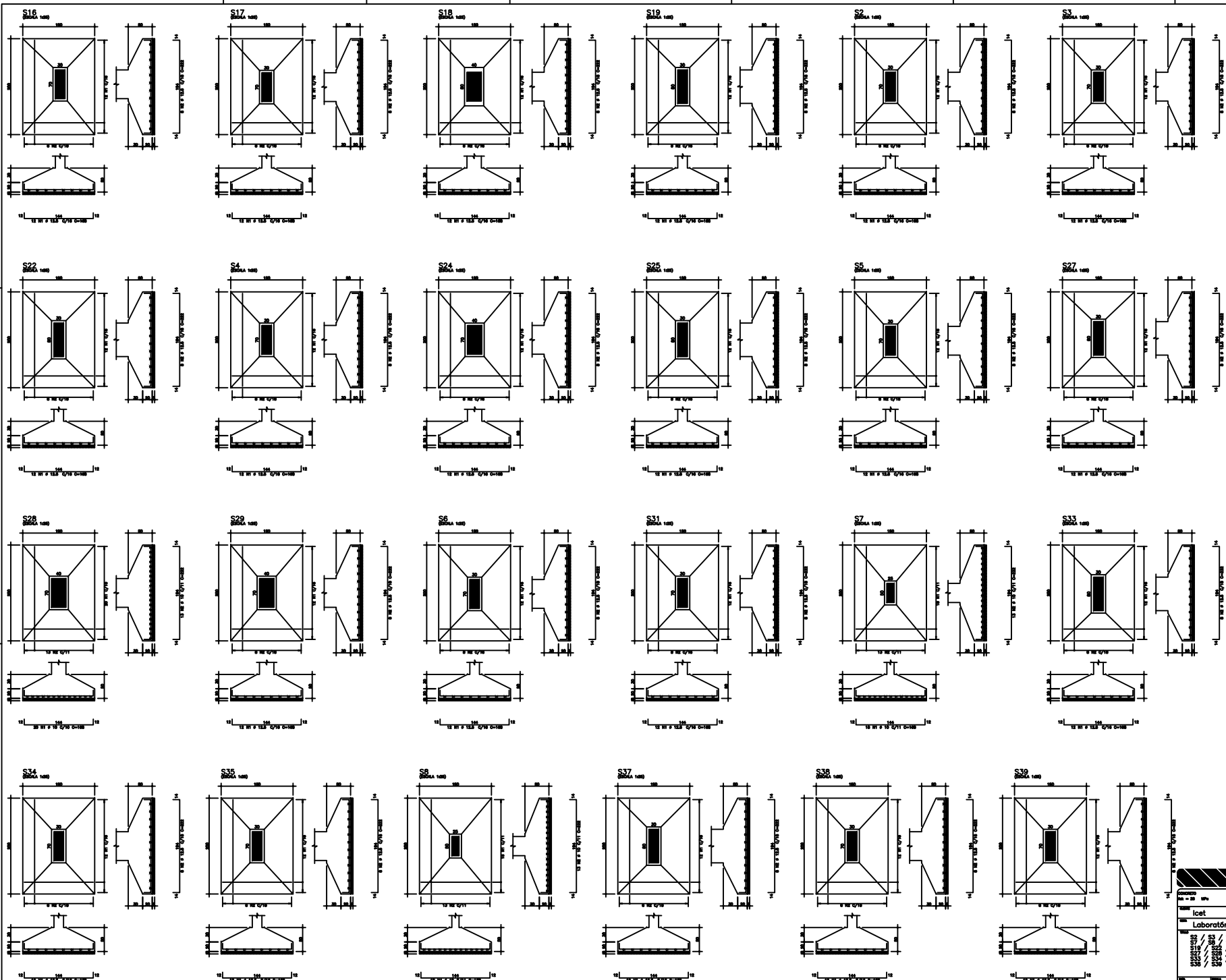


	AGE	SEX	WEIGHT (kg)	HEIGHT (cm)	STANDING REACH (cm)	REACH RANGE (cm)	GRASP RANGE (cm)
V12	0000	0	0	0	0	0	0
	0001	1	1	1	1	1	1
	0002	2	2	2	2	2	2
	0003	3	3	3	3	3	3
	0004	4	4	4	4	4	4
	0005	5	5	5	5	5	5
	0006	6	6	6	6	6	6
	0007	7	7	7	7	7	7
	0008	8	8	8	8	8	8
	0009	9	9	9	9	9	9
	0010	10	10	10	10	10	10
	0011	11	11	11	11	11	11
V13	0012	12	12	12	12	12	12
	0013	13	13	13	13	13	13
	0014	14	14	14	14	14	14
	0015	15	15	15	15	15	15
	0016	16	16	16	16	16	16
	0017	17	17	17	17	17	17
	0018	18	18	18	18	18	18
	0019	19	19	19	19	19	19
	0020	20	20	20	20	20	20
	0021	21	21	21	21	21	21
	0022	22	22	22	22	22	22
	0023	23	23	23	23	23	23
V14	0024	24	24	24	24	24	24
	0025	25	25	25	25	25	25
	0026	26	26	26	26	26	26
	0027	27	27	27	27	27	27
	0028	28	28	28	28	28	28
	0029	29	29	29	29	29	29
	0030	30	30	30	30	30	30
	0031	31	31	31	31	31	31
	0032	32	32	32	32	32	32
	0033	33	33	33	33	33	33
	0034	34	34	34	34	34	34
	0035	35	35	35	35	35	35
0036	36	36	36	36	36	36	
V15	0037	37	37	37	37	37	37
	0038	38	38	38	38	38	38
	0039	39	39	39	39	39	39
	0040	40	40	40	40	40	40
	0041	41	41	41	41	41	41
	0042	42	42	42	42	42	42
	0043	43	43	43	43	43	43
	0044	44	44	44	44	44	44
	0045	45	45	45	45	45	45
	0046	46	46	46	46	46	46
	0047	47	47	47	47	47	47
	0048	48	48	48	48	48	48
V16	0049	49	49	49	49	49	49
	0050	50	50	50	50	50	50
	0051	51	51	51	51	51	51
	0052	52	52	52	52	52	52
	0053	53	53	53	53	53	53
	0054	54	54	54	54	54	54
	0055	55	55	55	55	55	55
	0056	56	56	56	56	56	56
	0057	57	57	57	57	57	57
	0058	58	58	58	58	58	58
	0059	59	59	59	59	59	59
	0060	60	60	60	60	60	60
V17	0061	61	61	61	61	61	61
	0062	62	62	62	62	62	62
	0063	63	63	63	63	63	63
	0064	64	64	64	64	64	64
	0065	65	65	65	65	65	65
	0066	66	66	66	66	66	66
	0067	67	67	67	67	67	67
	0068	68	68	68	68	68	68
	0069	69	69	69	69	69	69
	0070	70	70	70	70	70	70
	0071	71	71	71	71	71	71
	0072	72	72	72	72	72	72

RESUMO AÇO CA 80-80			
AÇO	BT (mm)	COSPR (m)	PESO (kg)
CSB	8	228	81
CSA	8	281	100
CSA	10	286	183
CSA	12,5	38	27

Código		0001
Data = 28 SPs		0001
Nome	Icet	024
End.	Laboratório Icet	024
V112 / V115 / V122		00
Assinatura (assin)	Selo	007

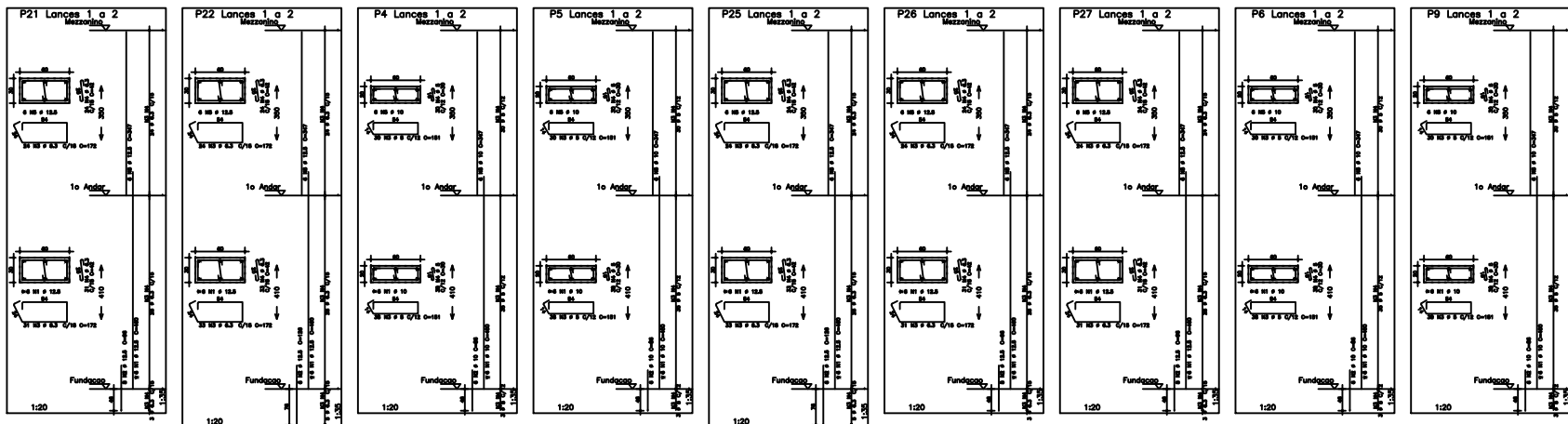
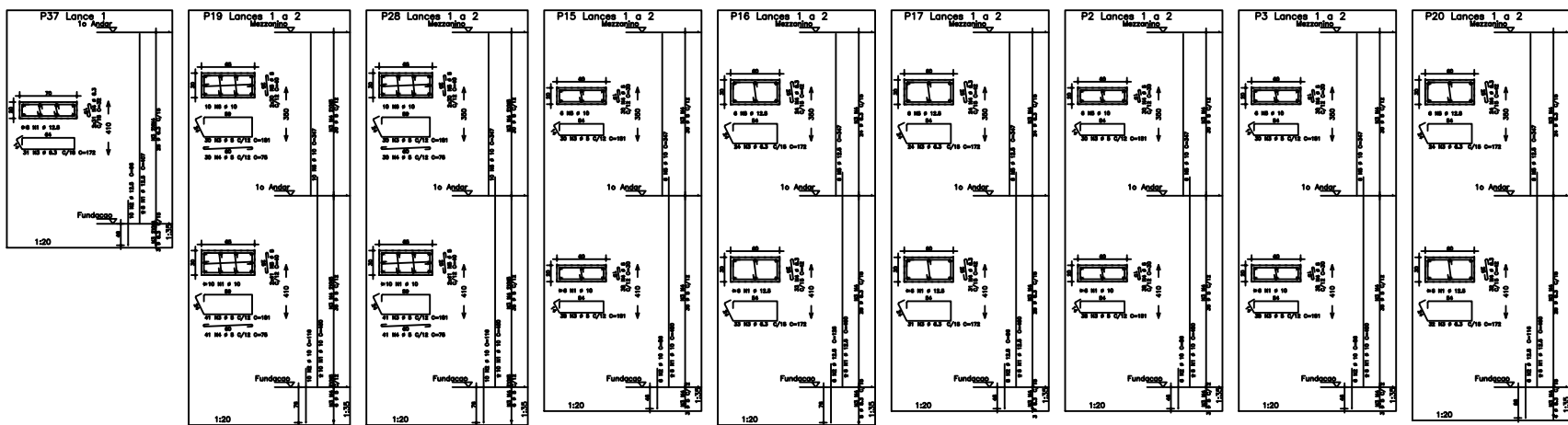
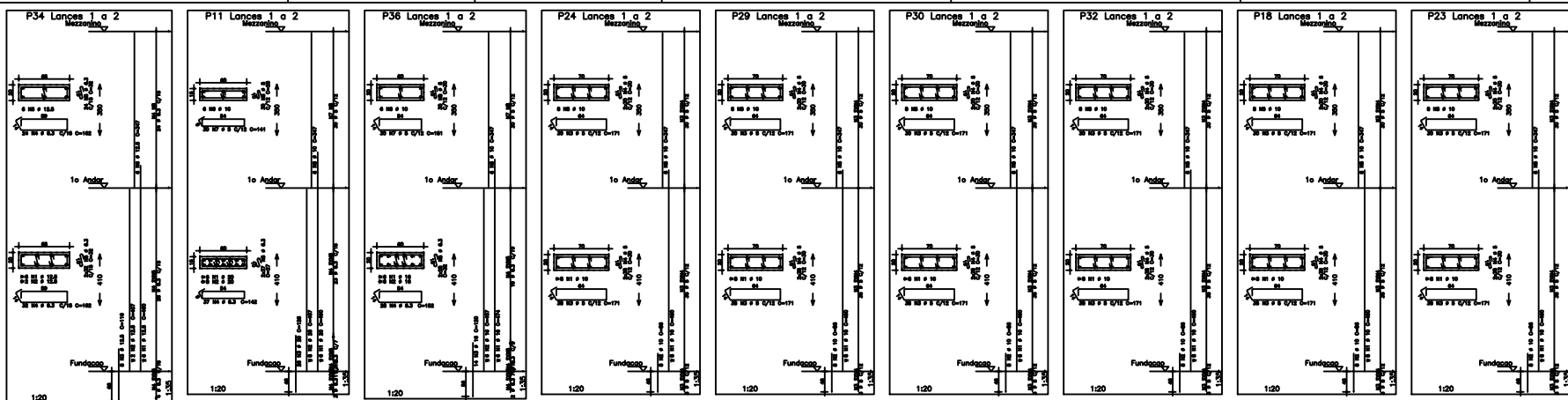
PRODUTIVO POR UMA VERSAO DO AUTODESK PARA ESTUDANTES

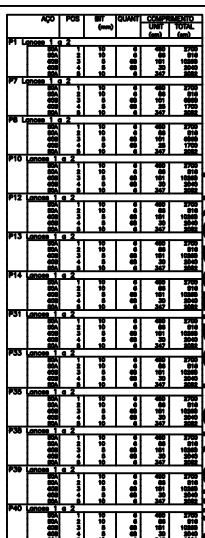


APR	POB	SEX	QUANT	COMPR	PREÇO
1	1	1	1	1	1
2	1	1	1	1	1
3	1	1	1	1	1
4	1	1	1	1	1
5	1	1	1	1	1
6	1	1	1	1	1
7	1	1	1	1	1
8	1	1	1	1	1
9	1	1	1	1	1
10	1	1	1	1	1
11	1	1	1	1	1
12	1	1	1	1	1
13	1	1	1	1	1
14	1	1	1	1	1
15	1	1	1	1	1
16	1	1	1	1	1
17	1	1	1	1	1
18	1	1	1	1	1
19	1	1	1	1	1
20	1	1	1	1	1
21	1	1	1	1	1
22	1	1	1	1	1
23	1	1	1	1	1
24	1	1	1	1	1
25	1	1	1	1	1
26	1	1	1	1	1
27	1	1	1	1	1
28	1	1	1	1	1
29	1	1	1	1	1
30	1	1	1	1	1
31	1	1	1	1	1
32	1	1	1	1	1
33	1	1	1	1	1
34	1	1	1	1	1
35	1	1	1	1	1
36	1	1	1	1	1
37	1	1	1	1	1
38	1	1	1	1	1
39	1	1	1	1	1
40	1	1	1	1	1
41	1	1	1	1	1
42	1	1	1	1	1
43	1	1	1	1	1
44	1	1	1	1	1
45	1	1	1	1	1
46	1	1	1	1	1
47	1	1	1	1	1
48	1	1	1	1	1
49	1	1	1	1	1
50	1	1	1	1	1
51	1	1	1	1	1
52	1	1	1	1	1
53	1	1	1	1	1
54	1	1	1	1	1
55	1	1	1	1	1
56	1	1	1	1	1
57	1	1	1	1	1
58	1	1	1	1	1
59	1	1	1	1	1
60	1	1	1	1	1
61	1	1	1	1	1
62	1	1	1	1	1
63	1	1	1	1	1
64	1	1	1	1	1
65	1	1	1	1	1
66	1	1	1	1	1
67	1	1	1	1	1
68	1	1	1	1	1
69	1	1	1	1	1
70	1	1	1	1	1
71	1	1	1	1	1
72	1	1	1	1	1
73	1	1	1	1	1
74	1	1	1	1	1
75	1	1	1	1	1
76	1	1	1	1	1
77	1	1	1	1	1
78	1	1	1	1	1
79	1	1	1	1	1
80	1	1	1	1	1
81	1	1	1	1	1
82	1	1	1	1	1
83	1	1	1	1	1
84	1	1	1	1	1
85	1	1	1	1	1
86	1	1	1	1	1
87	1	1	1	1	1
88	1	1	1	1	1
89	1	1	1	1	1
90	1	1	1	1	1
91	1	1	1	1	1
92	1	1	1	1	1
93	1	1	1	1	1
94	1	1	1	1	1
95	1	1	1	1	1
96	1	1	1	1	1
97	1	1	1	1	1
98	1	1	1	1	1
99	1	1	1	1	1
100	1	1	1	1	1

Laboratório Icet		0001
S2 / S3 / S4 / S5 / S6		026
S17 / S18 / S19 / S20 / S21 / S22		00
S23 / S24 / S25 / S26 / S27 / S28		
S29 / S30 / S31 / S32 / S33 / S34		
S35 / S36 / S37 / S38 / S39 / S40		

PRODUTIVO POR UMA VERSÃO DO AUTODESK PARA ESTUDANTES

[illegible][illegible]

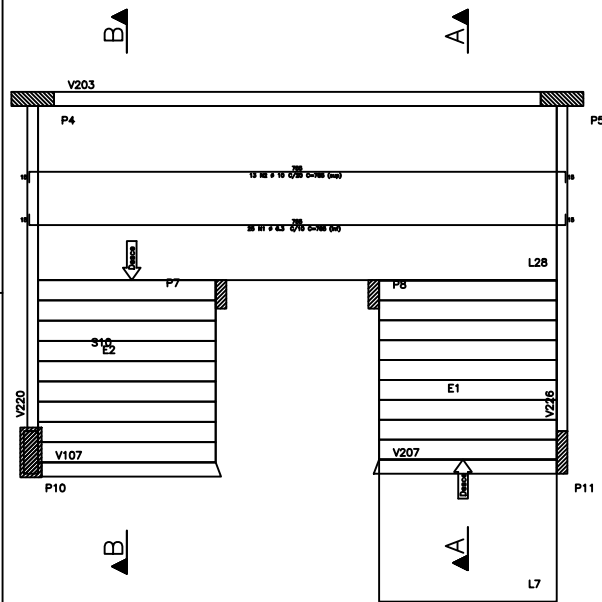


	AOQ	POS	BIT (mm)	QUANT	COMPRESSION	
					UNIT (mm)	TOTAL (mm)
P41	lanos 1	a 2	1	10	6	592
	00A	1	10	6	68	616
	00B	3	8	68	181	1028
	00C	4	8	68	20	2040
	00D	5	10	6	247	2588
P42	lanos					
	00A	1	10	6	687	5942
	00B	2	10	6	68	616
	00C	3	8	26	181	5726

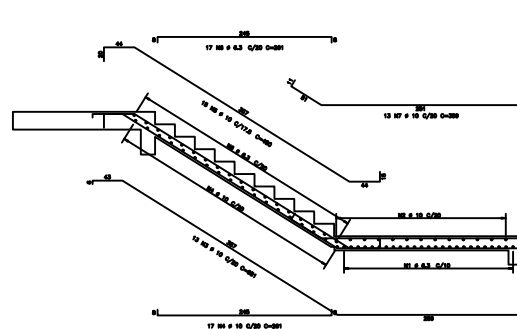
RESUMO AÇO CA 80-80			
AÇO	BIT (mm)	COMPR (m)	PESO (kg)
80x80	8	112 83	30 81
Peso Total		112 = 30 kg	
Peso C.A.		112 = 81 kg	

[illegible]

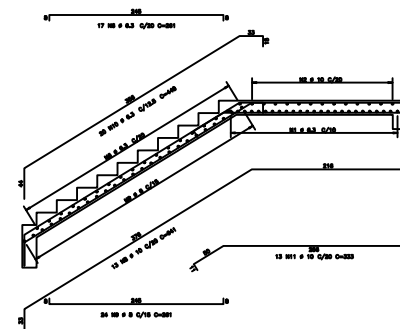
Corte B-B



Corte A-A



Corte B-B



APQ	POS	WT (mm)	QUART	COMPR UNIT (mm)	TESTO TOTAL (mm)
Plant	Seed	—	—	—	—
SSA	1	6.3	38	760	1820
SSA	2	10	13	760	1820
SSA	3	10	13	620	1820
SSA	4	10	17	440	1820
SSA	5	10	16	450	720
SSA	6	6.3	34	390	860
SSA	7	10	13	380	820
SSA	8	10	13	340	820
SSA	9	8	24	290	830
SSA	10	6.3	30	440	890

RESUMO AÇO CA 55-60			
AÇO	HT (mm)	COMPR (m)	PESO (kg)
55A	2,3	378	28
55B	8	62	28
55C	10	50	28
Peso Total		50A =	41X kg